



A Dubai based studio engaged in the craft of culturally focused, regional architecture, design and interiors, inspired by local context



INDEX

MASTERPLAN

- 13 | Yas Island Beach Club
- 17 | Delta Marina Masterplan
- 21 | Djibouti City Center
- 25 | Desert Rose
- 29 | Arch Angel

COMMERCIAL

- 35 | Motor City Community Center
- 41 | Meydan HQ Community Center
- 49 | Khalifa City Community Center
- 53 | District 11 Community Center
- 57 | Marina Commercial Center
- 61 | Warehouse and Distribution Center
- 65 | Fragrance Factory

RESIDENTIAL

- 69 | Taupe Residences
- 77 | Corner Villa
- 81 | Villa Lima
- 87 | J3 Villa
- 93 | Twin Villas
- 99 | Istrahas
- 105 | Modular Villas
- 111 | Canal Villa
- 117 | Villa K
- 123 | Courtyard Villa
- 129 | Garden Villa
- 135 | Adobe Villa
- 139 | Palm Villa
- 143 | Ghaf Villas
- 147 | Zanzibar Villa
- 151 | Native Residences

MEDICAL

- 157 | Amman Hospital
- 161 | Membrane Medical Center
- 165 | International City Hospital
- 169 | Sports Medical Center
- 173 | Views Medical Center
- 177 | African Clinic
- 181 | Business Bay Medical Tower
- 185 | Animal Welfare & Enrichment Center

EDUCATION

- 191 | Djibouti ISA School
- 195 | Khalifa City Nursery

LANDSCAPE

- 201 | Tashkeel Garden

INTERIOR / FIT-OUT

- 209 | Emirates Towers Office
- 215 | Special Guest Area UAE Pavillion
- 221 | District 1 Clubhouse
- 225 | Forge Fitness
- 229 | Tesla Showroom
- 233 | Walter's Coffee Roastery

EXHIBITION

- 239 | MANE Beautyworld
- 247 | Art of Scent
- 251 | Abwab Pavilions

PRODUCT

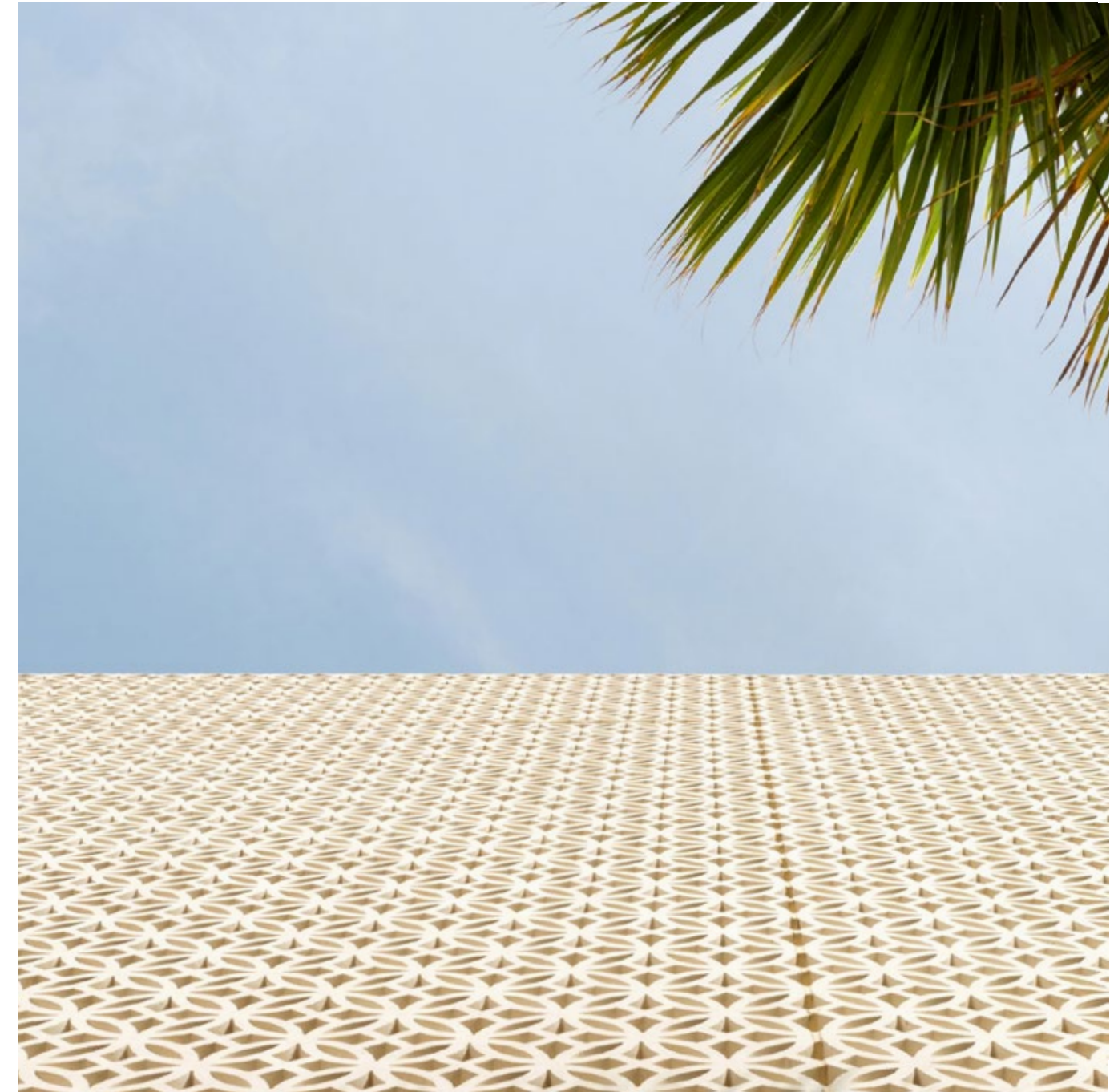
- 257 | Khatt
- 261 | D3 Please sit here
- 265 | Index Majlis
- 269 | Bird Light Installation
- 273 | Sr
- 277 | Nadd

LOCI is a Dubai-based practice operating in the fields of contemporary architecture, urban planning, interior architecture and product design. Established by Hani Fallaha and Hamad Khoory in 2012, LOCI is a culturally driven design-led studio that believes in the importance of context and the power of the locus to inform its design process and architecture.

An international team of architects and designers, under the guidance of its design director Roger Doyle promotes regional design that relates to its local context.

In an increasingly global world it's important that projects built in different places resonate with the history, environment and culture of the place in a meaningful way so that the people who live there feel that the building belongs there.

Combining a clear and elegant vision of pure, rational form and spatial quality, LOCI seek to instill in every aspect of our work an uncompromising dedication to quality. Functionality, durability and comfort are prime components within an architectural language that is aesthetic but resists fashion and trends, employing where possible locally sourced and produced materials. The driving forces behind our passion to produce good architecture and design include providing our clients with consulting that makes a real difference to their success, designing projects that are timeless, elegant, environmentally sensitive and that seek to increase the quality of life for the occupant and end-user.



PEOPLE



Hani Fallaha
ARCHITECT PARTNER



Roger Doyle
ARCHITECT DESIGN DIRECTOR



Borja Aznar Montero
PROJECT ARCHITECT



Ana Rebagliato
PROJECT ARCHITECT



Hamad Khoory
ARCHITECT PARTNER



Mariam Allawerdi
PROJECT ARCHITECT



Clémence Escande-Cuingnet
PROJECT ARCHITECT



Dennis Vermonden
PROJECT ARCHITECT



Sheena Kris Ariñas
ARCHITECT



Hamzeh Al-Nusirat
ARCHITECT



Bashar Roufail
STRUCTURAL ENGINEER



Feras Hamamreh
ACCOUNTANT



Hema Nayal
ARCHITECT



Karen Vindevogel
INTERIOR DESIGNER



Shieryll Mariano
STUDIO ADMINISTRATOR



MASTERPLAN



Yas Island Beach Club
Abu Dhabi . UAE

YAS ISLAND BEACH CLUB

Status: concept
Date: 2012 - 2013

With structures sprouting from the beach, Mangrove was designed around providing an elite beach experience. By allowing certain special areas to cater for different age groups. Tradition and green architecture dictated material choice, with "Areesh" structures scattered across the club, Mangrove reaffirmed both its connection to Abu Dhabi and its surrounding islands.



Beach club pavillion



Entrance



Aerial overview



DELTA MARINA MASTERPLAN

Status: concept
Date: 2014 - 2015
Area: 85,000 sqm - 915,000 sq.ft.

Situated on the warm shores of the horn of Africa, Delta answers a local need to create a mixed-use development along side an existing fishing village. While Delta creates a retail destination for the city, it has also enhanced the fisherman community on the island.



Marina overview



Retail plaza



Djibouti City Center
Djibouti . Djibouti

DJIBOUTI CITY CENTER

Status: concept
Date: 2015 - 2016
Area: 277,000 sqm - 3,000,000 sq.ft.



F&B Plaza



Boulevard leading to mosque



Desert Rose
Duhok . Iraq

DESERT ROSE

Status: concept
Date: 2013
Area: 1,000,000 sqm - 10,760,000 sq.ft.

An abundance of fertile soil, fresh water and healthy agriculture, Kurdistan stands out from the usually dry Iraqi landscape. With economic prosperity in its sights, Desert Rose aims at becoming a transport, agriculture, logistic and trade hub.

Desert Rose has been designed around the areas agricultural capabilities to provide the base and infrastructure. It builds on the strength of the country's natural resources while allowing it to advance and compete within the international market.



Overview



Overview



Arch Angel
World Islands . Dubai . UAE

ARCH ANGEL

Status: concept
Date: 2013
Area: 59,000 sqm - 635,000 sq.ft.



Aerial overview



Aerial overview



Villa overview



COMMERCIAL



Motor City Community Center
Motor City · Dubai · UAE

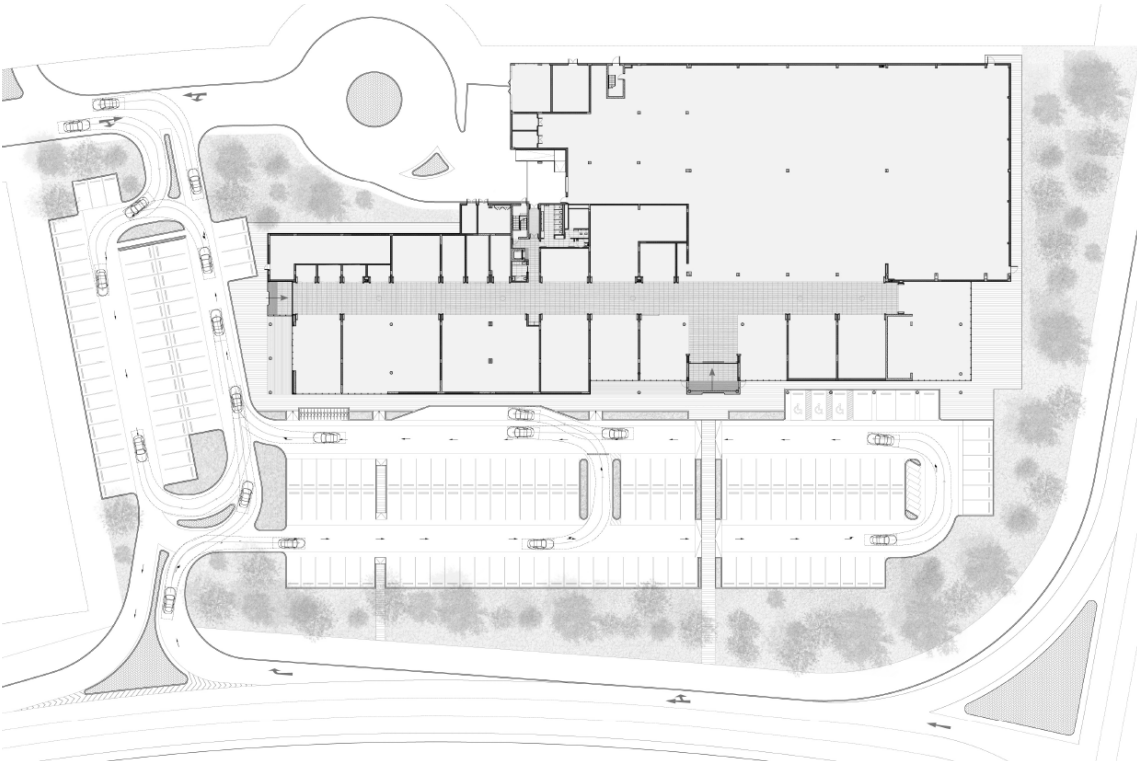
MOTOR CITY COMMUNITY CENTER

Status: completed
Date: 2016 - 2020
Area :7,200 sqm - 77,500 sq.ft.

Located at the gateway to Motor City, this ground floor retail development is set back from the roadway and approached through a carefully landscaped and shaded parking area. The retail program is arranged with the large grc clad supermarket volume providing presence to the main road, and the 20+ retail units set below an overhanging canopy which unifies the architecture and emphasizes its impressive horizontality.

The customer is guided to the supermarket from the parking or drop-off areas along the shaded landscaped pathway under the canopy and via an internal 'retail avenue', a hardscaped central spine, with skylights drawing natural light inside diffused through curved translucent ceiling panels forming an elegant promenade. The roof canopy is rendered externally and has vine planters along its edge to create a natural canopy. External paving extends inside; olive trees are placed along the route with wood benches accentuating the street-like quality of this air-conditioned space. Carefully designed shop fronts and the central roof canopy and landscaping forms the centerpiece of the project. Large sections of full height glazing to the main north facade identify the entrances and F&B units. The walls under the canopy, the three-storey sky lit atrium over the main entrance and the Waitrose volume are finished in textured plaster, in three different finishes, a pure, tactile treatment that is appropriate to a region synonymous with ornamentation, and provides relief to the large retail volumes.

The architecture has been designed to be flexible to accommodate and screen the necessary large MEP equipment and plant, all contained within the main canopy and flat roofs of the closed volumes carefully concealed from view. A large solar farm is proposed for the main roof to offset the running costs of the project. A high level of insulation to walls and roofs, minimal exposed glazing and predominantly solid treatment of facades combine to ensure an environmentally responsive building that goes beyond existing green building standards.



Ground floor plan



Main entrance



Mall skylights



Facade detail



Retail entrance



Meydan HQ Community Center
Meydan . Dubai . UAE

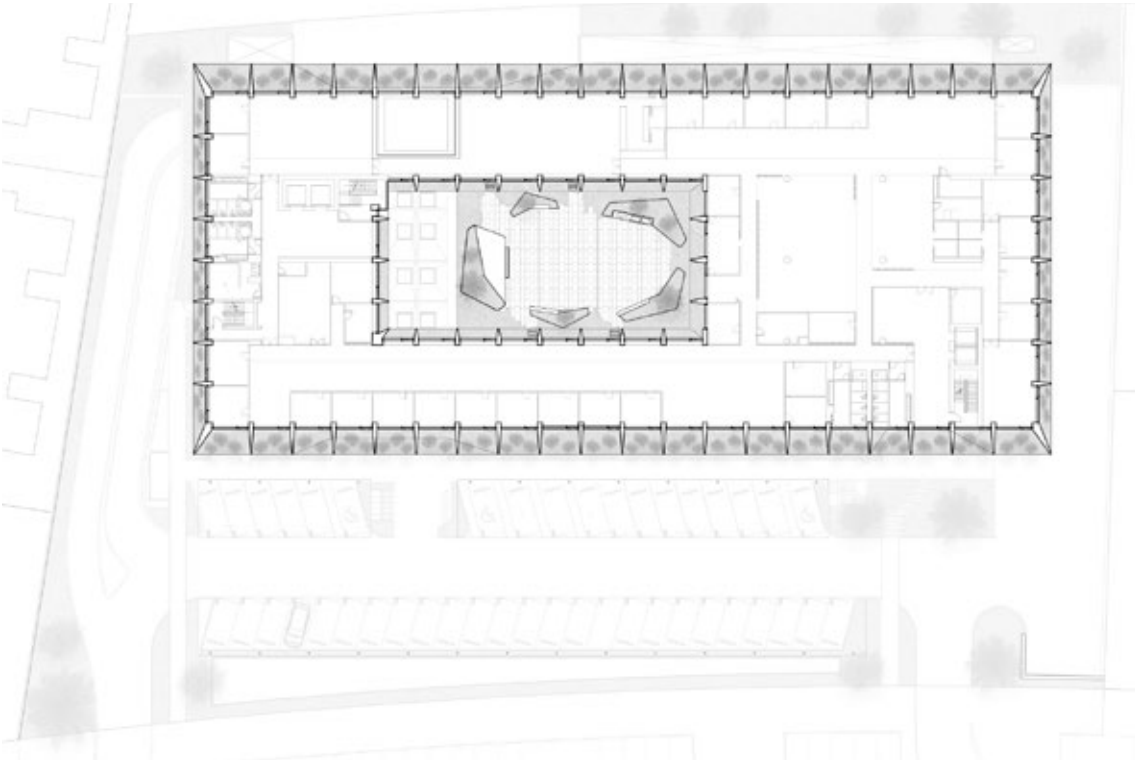
MEYDAN HQ COMMUNITY CENTER

Status: completed
Date: 2017 - 2019
Area: 18,200 sqm - 196,000 sq.ft.

This new state of the art retail & office headquarters is surrounded on all sides by residential blocks, between road and park. The intention was to create a pure elegant 'pavilion in the park' that is both autonomous and contextual. Strong visual and physical connections to the park are established at ground level with an internal 'street' linking the supermarket, shops and restaurant to the park. Daylight from large central skylights and extensive gardens creates a bright, natural internal environment that has a close relationship to the exterior.

The massing and facade treatment is generated from the functions contained within, mostly solid at ground level punctuated by massive carved openings strongly announcing the entrances to the supermarket, office lobby and park, carved out of the base to visually draw users inside. Extensively glazed upper level offices are orientated around a central landscaped courtyard to maximize the views over the park. There is a mix of open plan offices and glass enclosed offices and meeting rooms. Breakout spaces, terraces and informal meeting areas promote communication and interaction across departments to provide a productive, creative and satisfying work environment.

The architecture and materiality is a direct response to context and local environment, with the solid base of textured precast concrete, with deep vertical grc fins to screen and protect the glazed facades from direct sunlight, reducing heat build up but allowing uninterrupted views. Vertical insulated panels act as additional shading for the offices and allow access to the interior courtyards. The facades provides a dual visual aspect, and natural light to filter through the high quality office spaces. The MEP is carefully concealed in its own space at upper level, screened from view, with the entire roof surface covered by photovoltaic panels to generate electricity and offset the running costs of the building.



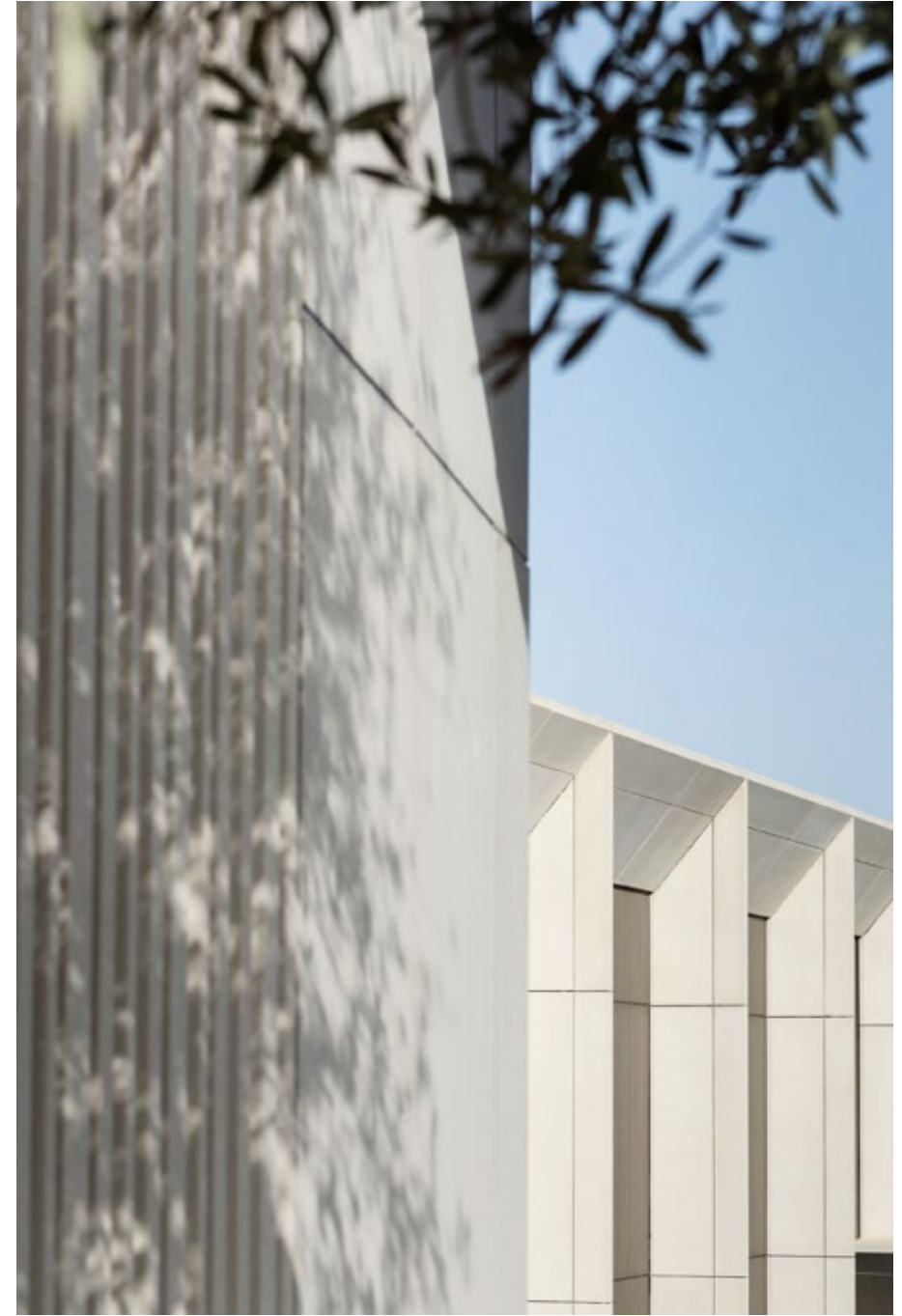
First floor plan



Glass reinforced concrete facade



Facade detail



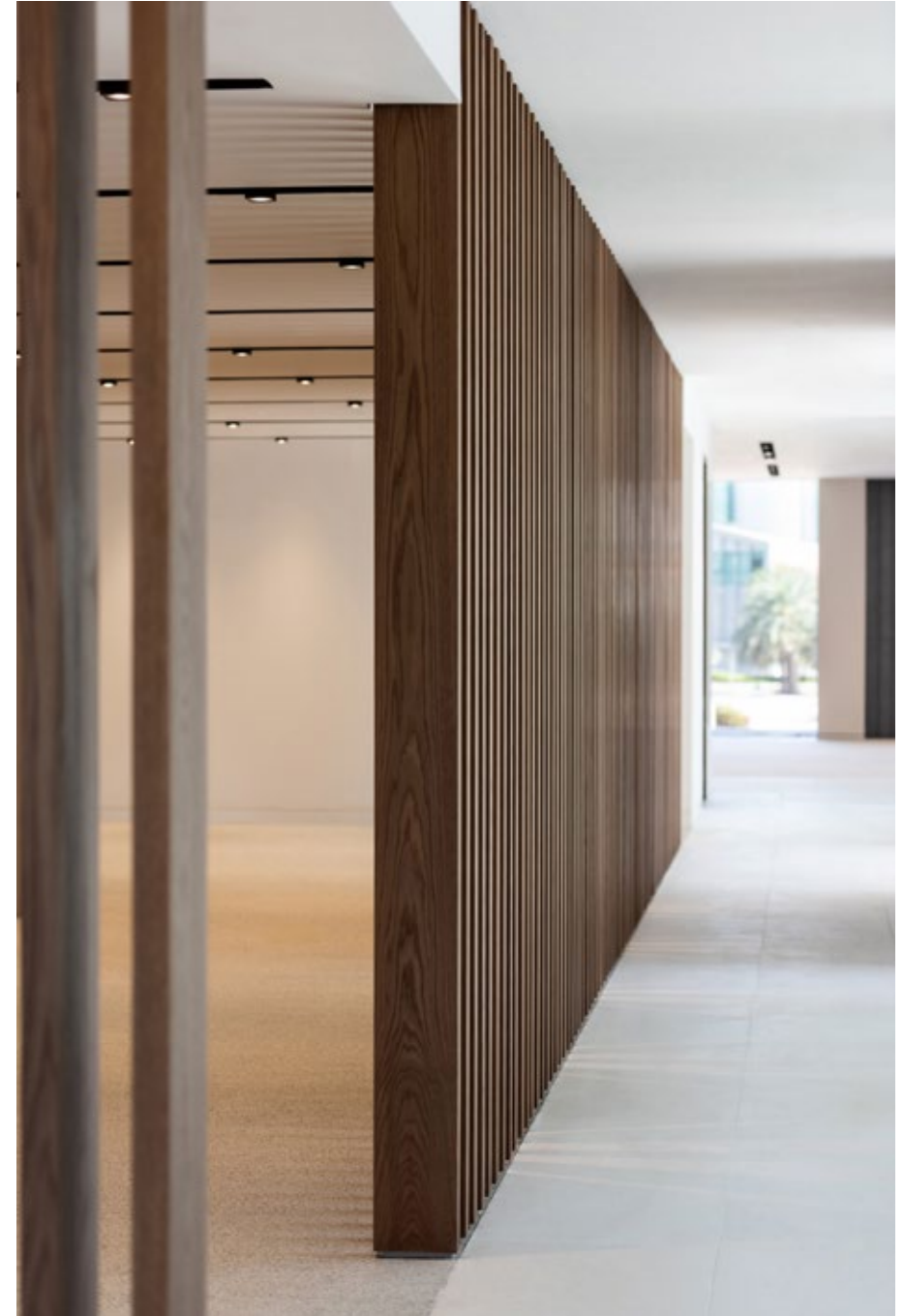
Courtyard detail



First floor office



First floor office



Internal wooden screens



Khalifa City Community Center
Khalifa City . Abu Dhabi . UAE

KHALIFA CITY COMMUNITY CENTER

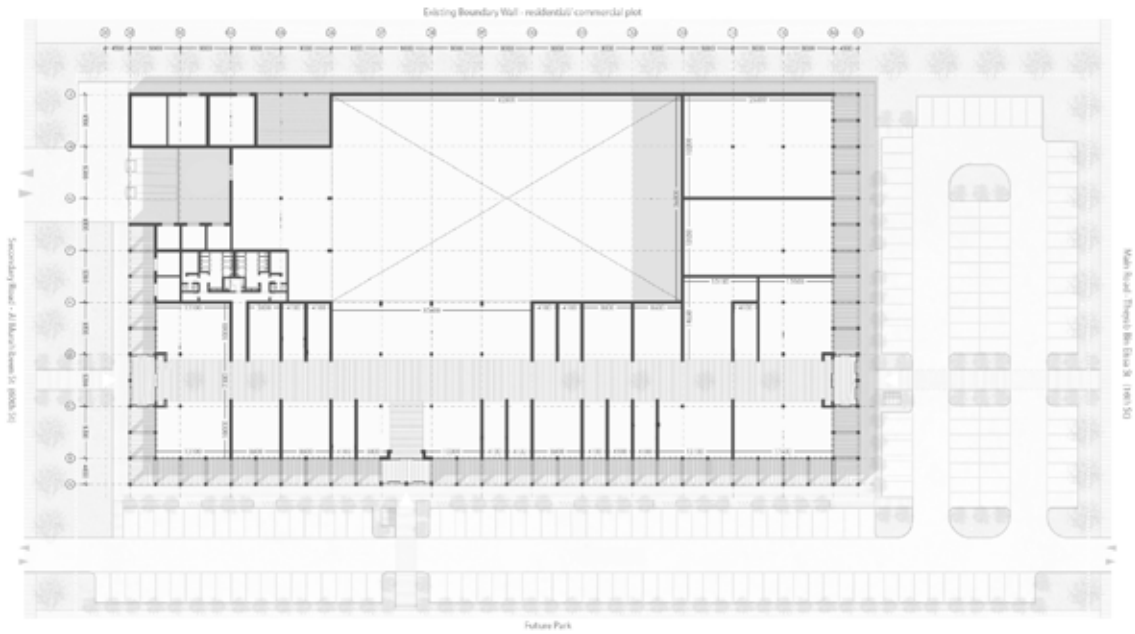
Status: competition winning entry
Date: 2020 -
Area: 9,300 sqm - 100,000 sq.ft.

The site is prominently and centrally located in Khalifa City, Abu Dhabi, along the public linear core, connecting Shahama Road to the north, with Sweihan Al Hayer Road to the south. The site is accessed from the main road entering to the east, along the retail spine, with the longest façade oriented to the south. A covered pedestrian walkway offers shade from the strongest south light, acting as a solar shading device, reducing heat buildup to the interior and connecting the retail units along the perimeter to and from the parking areas.

The Retail Community Center is set back from the roadway to both sides and approached through a generously landscaped and shaded parking area. The retail program is contained within a colonnaded and covered loggia to the front, rear and side, which articulates and unifies the program, with F&B functions activating the corners, utilizing the open but shaded terraces. Generous parking provisions are located close to the façade for ease of circulation for the customer, with landscaping acting as natural visual screens between parking and pedestrian walkways.

The entrances are at either ends and the center, with glass boxes inserted into the colonnaded façade opening into the retail mall. The mall acts as a central spine with trees and benches to the center, and skylights to the edges to draw natural light inside diffused through wood fins forming an elegant well-lit promenade.

Façade screens, lighting and landscaping generate an architecture that is restrained, elegant and uniform. The materials employed are pure and unembellished – textured plaster to the façade columns and walls, horizontal aluminium screens to the façade bays that allow views through but also shade and enclose the paved walkway in front of the retail units, wood fin and plasterboard ceiling to the mall with linear recessed track spotlights, stone pilaster columns to retail units and fully glazed shopfronts with integrated signage.



Ground floor plan



Mall entrance



District 11 Community Center
MBR City District 11 . Dubai . UAE

DISTRICT 11 COMMUNITY CENTER

Status: ongoing
Date: 2017 -
Area: 8,600 sqm - 93,000 sq.ft.

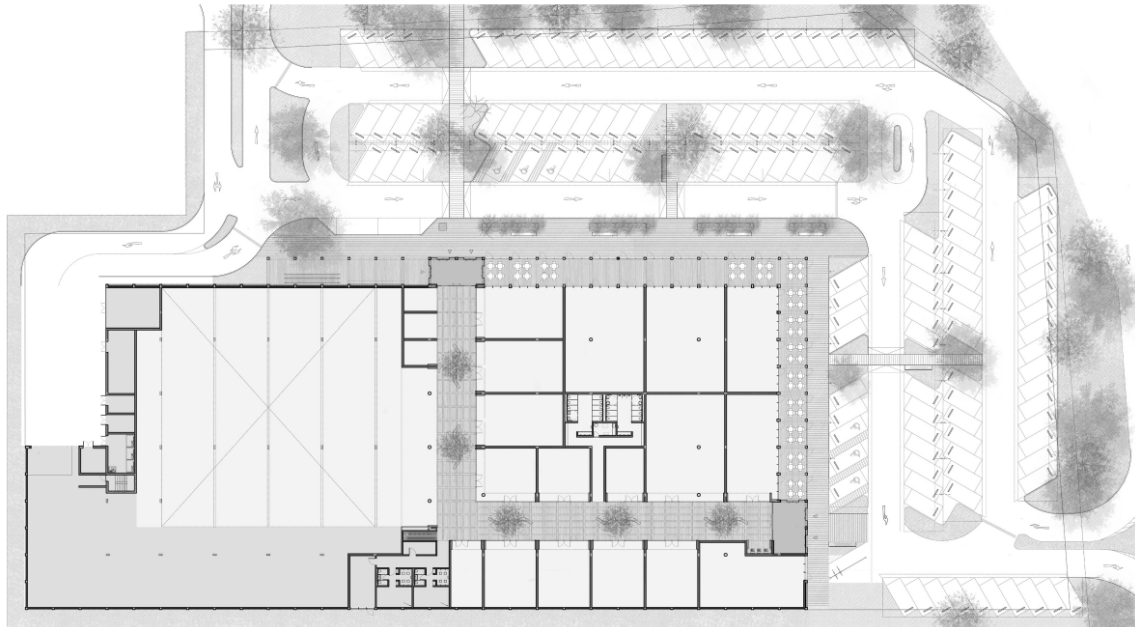
Located at the center of the developing residential District 11, this retail development is set back from the roadway and approached through a carefully landscaped and shaded parking area. The retail program is contained within a colonnaded and covered loggia to the front, which articulates and unifies the program, with F&B functions activating the entire façade, with open and enclosed terraces.

Entering at either ends of an internal 'avenue', through glass boxes inserted into the colonnaded façade, this hardscaped central spine, with skylights drawing natural light inside diffused through translucent ceiling panels forms an elegant promenade, linking the retail units and leading to the main focus of the supermarket. The intention is to create a village center, where customers can linger either within the retail avenue, or the open and closed F&B terraces, stop for lunch, enjoy a coffee, as well as shopping.

The customer is guided to the supermarket from the parking or drop-off areas along the exterior covered 'loggia' or via the internal 'retail avenue', where external paving extends inside, olive trees are placed along the route with wood benches accentuating the external street-like quality of this air-conditioned space. This reflects a new approach to retail design in the region, where interior 'malls' and replaced with bright open air-conditioned spaces that are pleasant to be in and act as interior streets, especially necessary during the hot summer months, where you are inside but have the feeling of being outside. elegant and uniform. The materials employed are pure and unembellished – textured plaster to the façade columns and walls, horizontal aluminium screens to the façade bays that allow views through but also shade and enclose the paved walkway in front of the retail units, wood fin and plasterboard ceiling to the mall with linear recessed track spotlights, stone pilaster columns to retail units and fully glazed shopfronts with integrated signage.



Mall entrance



Ground floor plan



Retail corridor



Waitrose @ DIMC

Starbucks

Waitrose

Waitrose

Marina Commercial Center
Marina, Dubai, UAE

MARINA COMMERCIAL CENTER

Status: concept
Date: 2017
Area: 11,610 sqm - 125,000 sq.ft.

Located in the heart of the Marina, Dubai, adjacent to the Yacht Club and Barasti Beach Club, this prime new retail F&B center is overlooked by residential towers to the south with the Marina to the north. A strong circulation axis is created through the site linking the supermarket, shops and restaurants to the Marina. A prominent roof canopy unifies the building and contains the pure retail volumes below, screened from the sun with an extensive louver screen.

Pure massive volumes project in all directions to announce the functions within, all positioned around a central sky lit atrium. Daylight filters down from the large central skylights and a grove of olive trees inside the retail street creates a bright, natural internal environment that has close connections to the exterior. Vertical circulation links to the upper level expansive terraces, set beneath pergolas, with impressive views over the Yacht Club and Marina. The facility is served by a full underground parking level, which has been designed to ensure ease of access, and a pleasant environment with natural light filtering down gabion terraces.



Aerial overview



External impression



Mall impression



Warehouse and Distribution Center
Technopark . Dubai . UAE

WAREHOUSE AND DISTRIBUTION CENTER

Status: ongoing
Date: 2020-
Area: 14,800 sqm - 160,000 sq.ft.

Located in Dubai Technopark, this project comprises the extension of the headquarters for the market leader in cable, wiring and cable management in Dubai. The existing warehouse for large drums is supplemented by a new state-of-the-art warehouse for optimized storage of smaller components. A showroom displaying the various products and solutions is added overlooking the central courtyard between existing and new warehouse.

Designed to end to end for customer satisfaction and the highest of product delivery standards in the region. The front end contains a fulfillment center/offices to create a presence on the street. The warehouse design is specific to certain products, but racking, etc. to allow future adaptation and flexibility. The warehouse volume is higher in scale for optimized racking.

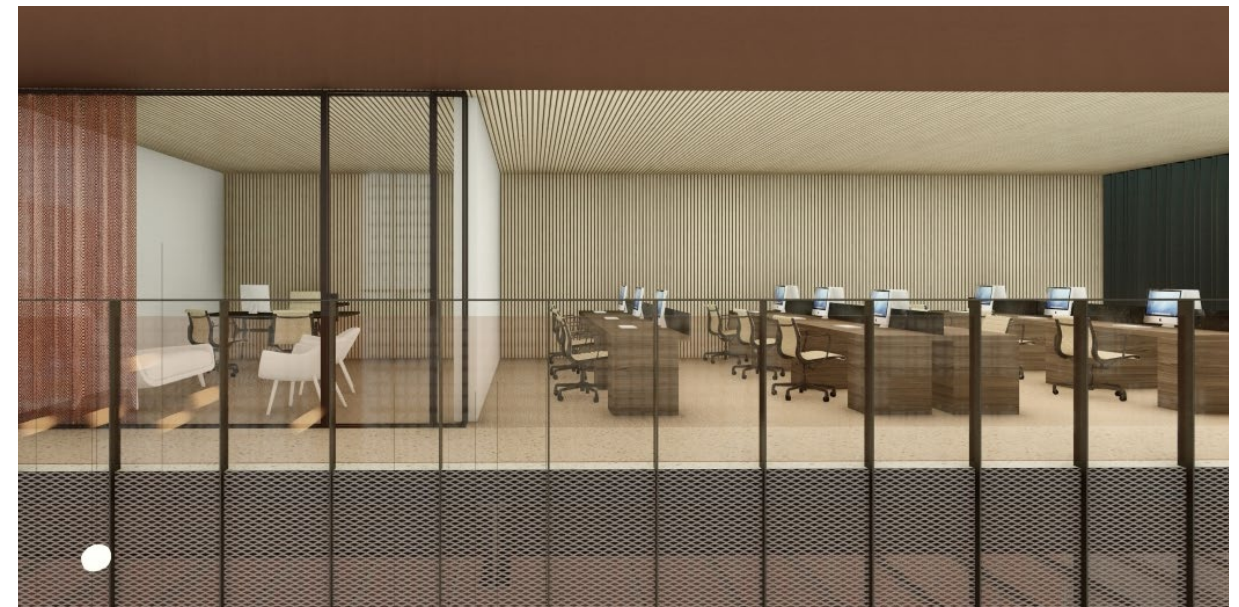
A screen features offers a visual connection of warehouse 1.0 and 2.0, unifying the height variance, warehouse façades, landscaping, etc.



Showroom



External view



Mall impression



Fragrance Factory
Jebel Ali . Dubai . UAE



RESIDENTIAL



Taupe Residences
Meydan . Dubai . UAE

TAUPE RESIDENCES

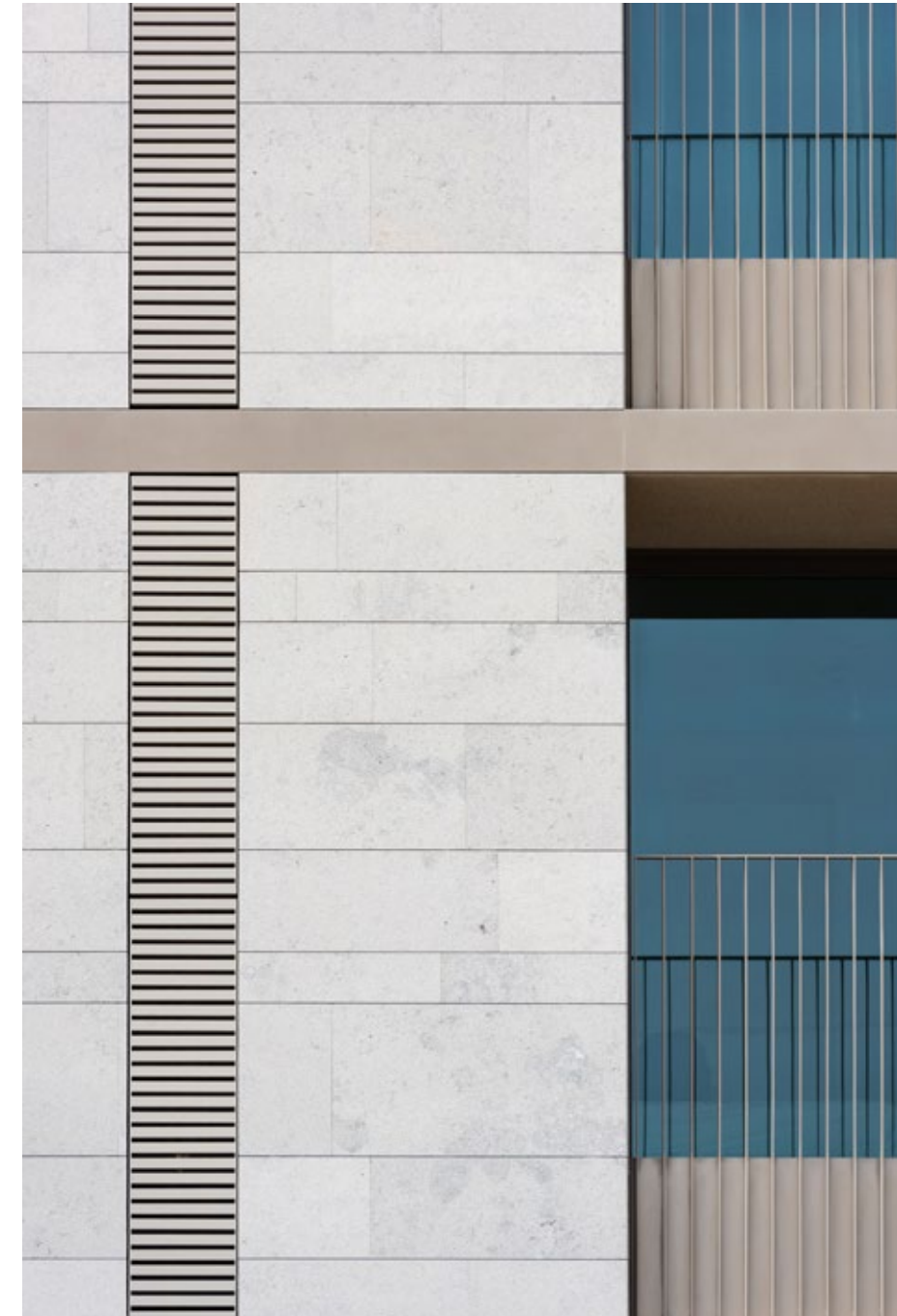
Status: completed
Date: 2015 - 2019
Area: 7,200 sqm - 77,500 sq.ft.

Located in the developing neighborhood of Meydan, this G+4 prime residential development is designed as an efficient, pure form derived from its site, a clean mass with carefully carved openings and a durable materiality.

A dark base of aluminium fin and mesh screens, the residential units float over as a rigorous natural stone clad volume, with deep set openings onto terraces shading full-height glass and bronze finished elements which quietly articulate the elevations with rhythm and texture.



Typical floor plan



Facade detail



Shaded terraces



Road side view



Entrance



Typical apartment kitchen



Typical apartment bathroom



Entrance lobby



Corner Villa
Jumeirah, Dubai, UAE

CORNER VILLA

Status: completed
Date: 2014 - 2016
Area: 870 sqm - 9,360 sq.ft.

Constructed of travertine, limestone and wood this villa celebrates the beauty of its material palette. The form appears to have been chiselled out of a solid mass, in a discreetly elegant yet monumental way. The rectilinear composition of cuboid volumes is modelled around an impressive central double height space that connects all of the internal spaces together.

Subtle landscaping and a calming pool surrounds the voluminous and geometric design of the villa allowing it to sink softly into its context.



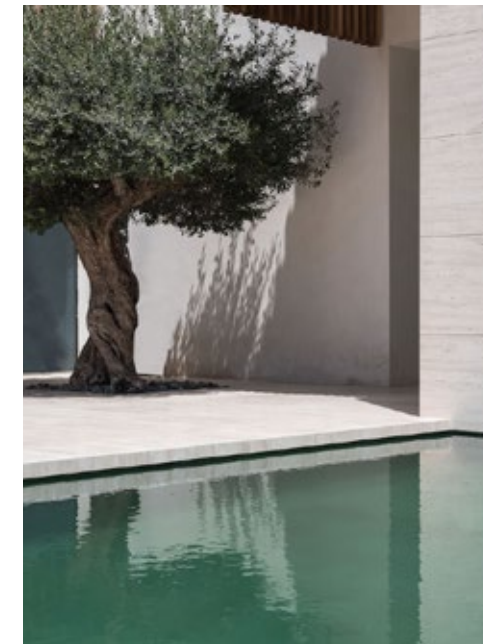
Ground floor plan



Garden and pool



Entrance



Pool detail



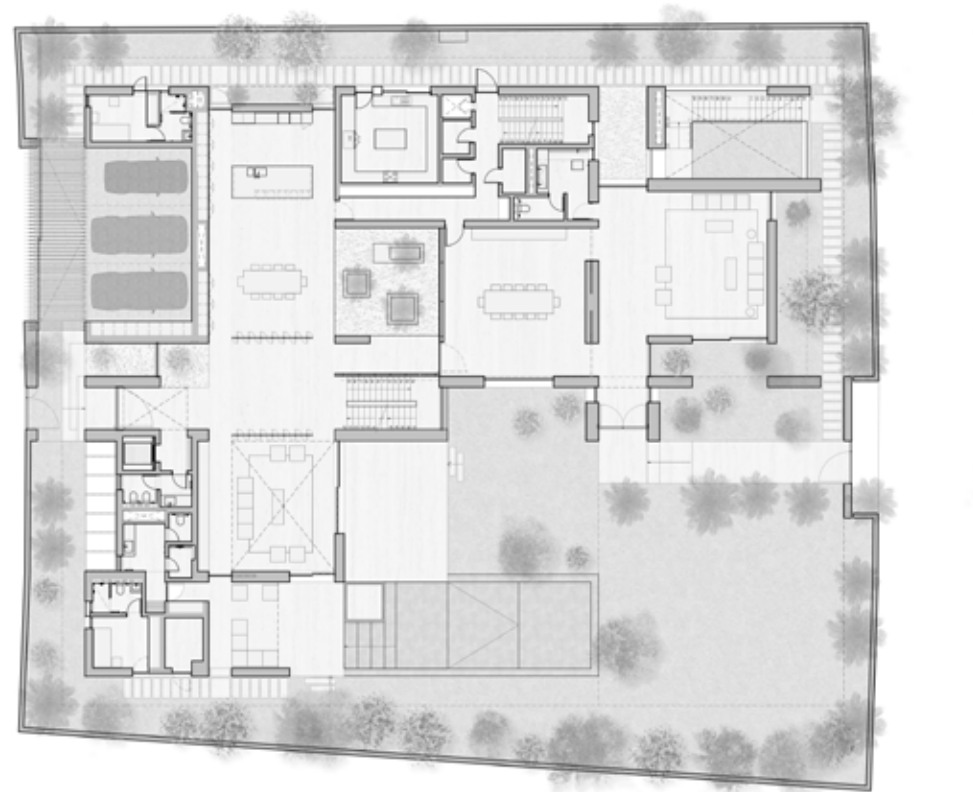
Villa Lima
Nad El Sheba , Dubai , UAE

VILLA LIMA

Status: completed
Date: 2015 - 2018
Area: 1,865 sqm - 20,000 sq.ft.

"Lima" wraps around a central oasis that allows all internal spaces to overlook its verdure. During its early design stages, the "L" shaped massing has been designed with the intention of creating a sanctuary from Dubai's desert sun by casting a shadow over the garden.

Not only does this activate its external spaces, but allows us to take full advantage of the shaded façade and maximize the amount of natural light without compromising on solar thermal gain.



Ground floor plan



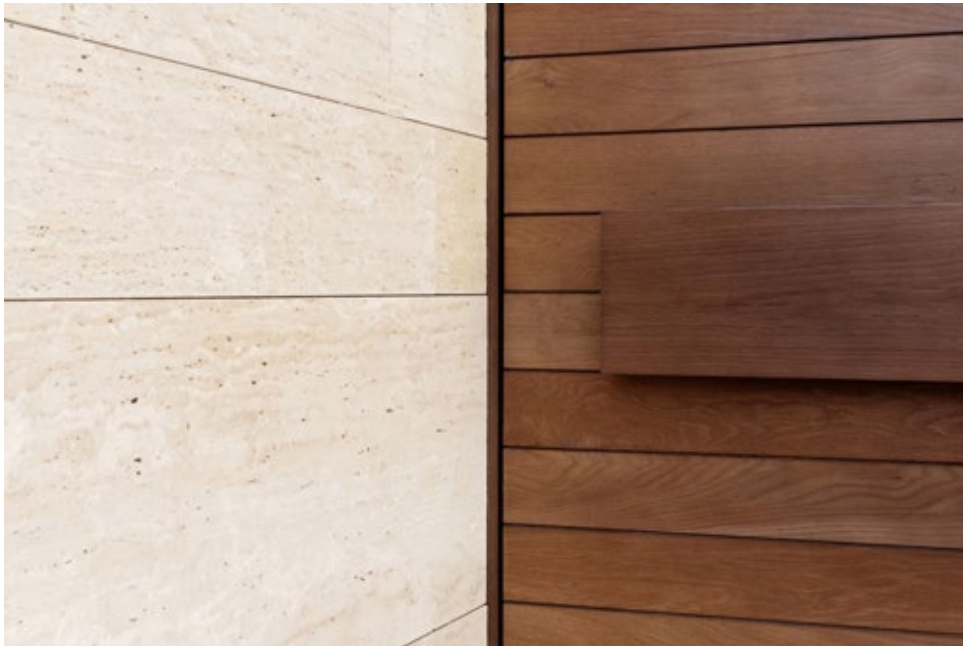
Garden and pool



Pool detail



Family living space



Entrance door detail



Facade detail



J3 Villa
Jumeirah . Dubai . UAE

J3 VILLA

Status: Ongoing
Date: 2022 -
Area: 1,350 sqm - 14,500 sq.ft.

The house on a square site in a quiet Jumeirah residential street in Dubai is identified by a row of mature ghaf trees along the street edge. Ghaf as the national tree of the UAE of cultural and traditional significance with a canopy that appears like a filter when light passes through. The concept is a reinterpretation of vernacular architecture employing locally adapted elements such as deep recessed openings, mashrabiya screens, shaded interiors and indirect natural light with an emphasis on the integration of architecture, interior space and light with the context of local semi-arid landscape.

Entering through the tree canopy an entrance courtyard stone establishes the public dimension or threshold of the house. Beyond this the private interior of the house is slowly revealed, the circulation planned so that spaces slowly unfold in an experiential and spatial journey. The concept is informed by local characteristics-social, environmental and material and the layering of spaces and architectural elements to establish a balance of openness, privacy, sunlight, shade and views towards the tree canopy. The natural vegetative screen filters the architecture, which is expressed in pure monolithic elements of stone and wood that suspend over the gardens shading outdoor spaces and terraces.

The interior space unfolds gradually and never all at once. From the compressed entrance courtyard, the space narrows further upon entry and then dramatically expands in the central living space, the centerpiece of both plan and architecture. Serving as both formal and family living spaces, the double height grand lounge is balanced by a more intimate grand dining room and mezzanine family lounge taking full advantage of the view and light at different heights and aspects.



Ground floor plan



Road side view



Majlis view



Dining view



Master bedroom



Facade detail



Twin Villas
Nad Al Sheba , Dubai , UAE

TWIN VILLAS

Status: ongoing
Date: 2021 -
Area: 550 sqm - 5,900 sq.ft.

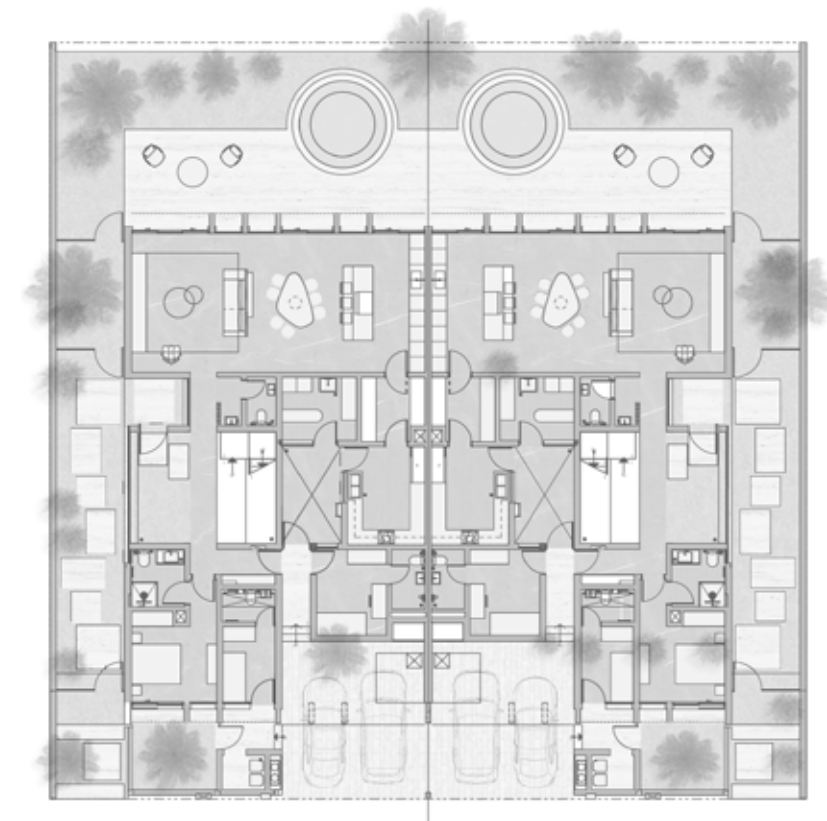
A series of villas designed to be adaptable to suit varying site orientations in Dubai. Set within rectangular plots the twin villas are conceived as a reinterpretation of the traditional Arabic courtyard house. Carved out of the pure volume deep-sets screened full height openings and a variety of courtyard spaces provide maximum natural light and privacy to the interior spaces modulating sunlight views and privacy.

The façade concept is expressed as a pure cast concrete frame emphasizing the vertical and creating a variety of openings related to the interior spaces. Completely open to the street and garden, but closed to the sides apart from a single large opening to the entrance courtyard. The full height openings within the concrete frame ensure maximum natural light and views with modular screens to filter direct sunlight and ensure privacy.

Entering along the side garden an internal courtyard space leads to the main open plan living space occupying the garden with a full width shaded terrace and small pool. Service spaces occupy the street side screened by a stone wall and sliding garaged door. The upper-level master bedroom and a family lounge occupy the garden side with three bedrooms to the street side connected by a central stairs and gallery within an interior courtyard. A second interior courtyard allows light and ventilation to the main service spaces to the center.

Natural materials are employed to reinforce the concept of the villa—cast concrete façade, local natural stone walls, full height openings and mashrabiya wood screens provide privacy and filter the natural light to the warm interiors.

The landscape is integral creating a natural environment in which the villas are situated. Perimeter trees a variety of palms and locally adapted plant species provide nature, privacy, shading and colour as a backdrop to the pure tectonic architectural expression.



Ground floor



Garden view



Living and dining view



Road side view



Entrance view



Master bedroom



ISTRAHAS

Status: concept
Date: 2021
Area: 450 sqm - 4,850 sqft and 250 sqm - 2,700 sq.ft.

The concept for the Istraahas is an arranged series of volumes creating an atmosphere that is internal and private but still open and filled with natural light filtering from above and through the narrow openings between the volumes. The residence presents a closed appearance from the street, but then following a sequence of entrance through courtyards opens dramatically to the view from the central living space.

Entering through a stone wall, a transition space acts as both family and majlis entrance linked but separated which allows the majlis to be independent from the main house. The entrance leads to a central courtyard and to the central living space of sunken lounge which opens to views to both sides and the shaded terrace and pool to the garden side. The central space is light filled but secluded with views in all directions through the courtyard to a kitchen, and dining beyond. The service volume is to the back corner and the bedroom volumes set either side of the terrace, with master bedroom enjoying views of the main garden.

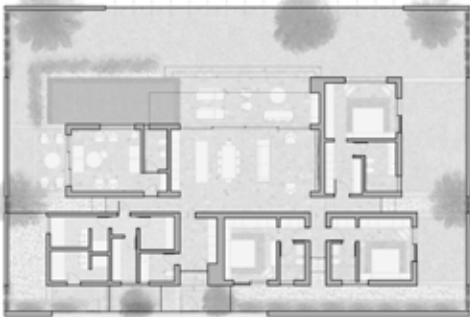
The materiality is pure but refined—light travertine stone wall stoned to blend with the mountains, large deep set window openings, mashrabiya wood screens to filter light and views, and pergola to cover the terraces and shade the interiors. The windows to the terrace completely slide away creating a true inside/outside experience. The landscape is composed of locally selected and adapted vegetation, side gardens to the bedrooms and secondary spaces and the master bedroom with its own private garden. The central living space overlooks the terrace, infinity pool and garden with raised views to the landscape and mountains beyond.



Masterplan development



450m2 Istraaha



250m2 Istraaha



Garden view



Garden view



Garden view



Living and dining view



Central courtyard view



MODULAR VILLAS

Status: under construction
Date: 2016 -
Area: 600 sqm - 6,500 sq.ft.

A pair of twin villas are located in the developing residential area of Barsha. Set within a rectangular footprint, the two storey volumes were conceived as a reinterpretation of the traditional Emirati courtyard house. Carved out of the pure massive volume, deep-seffull height openings and a variety of courtyards spaces provide maximum natural light and privacy to the interior spaces.

Entering through stone walls, travertine steps lead out to draw into a small open courtyard which conceals the full height wooden entrance door, creating a shaded threshold from the street. The ground floor living spaces are arranged around a large and small courtyard positioned diagonally opening deep internal vista through the plan to the garden beyond. A wood clad box divides the lounge, kitchen and dining areas and conceals service areas. Three self-contained spacious ensuite bedrooms are separated from the large master suite by the upper level family lounge and study arranged around private enclosed courtyards. Extensive landscaping with mature locally sourced trees and vegetation shade and protect the external pool area and terrace.

As simple unembellished palette of materials is employed to reinforce the local concept of the house. Walls are rendered externally with sand texture, travertine floor, iroko wood doors and screens, panoramic sliding windows allow ventilation and maximize the connection to the exterior. The roof and walls are thick and well insulated to protect the internal spaces from sun exposure and reduce energy requirements from the solar roof.



Ground floor



Entrance



Road side view



Family lounge



Family dining



Canal Villa
Dubai Water Canal . Dubai . UAE

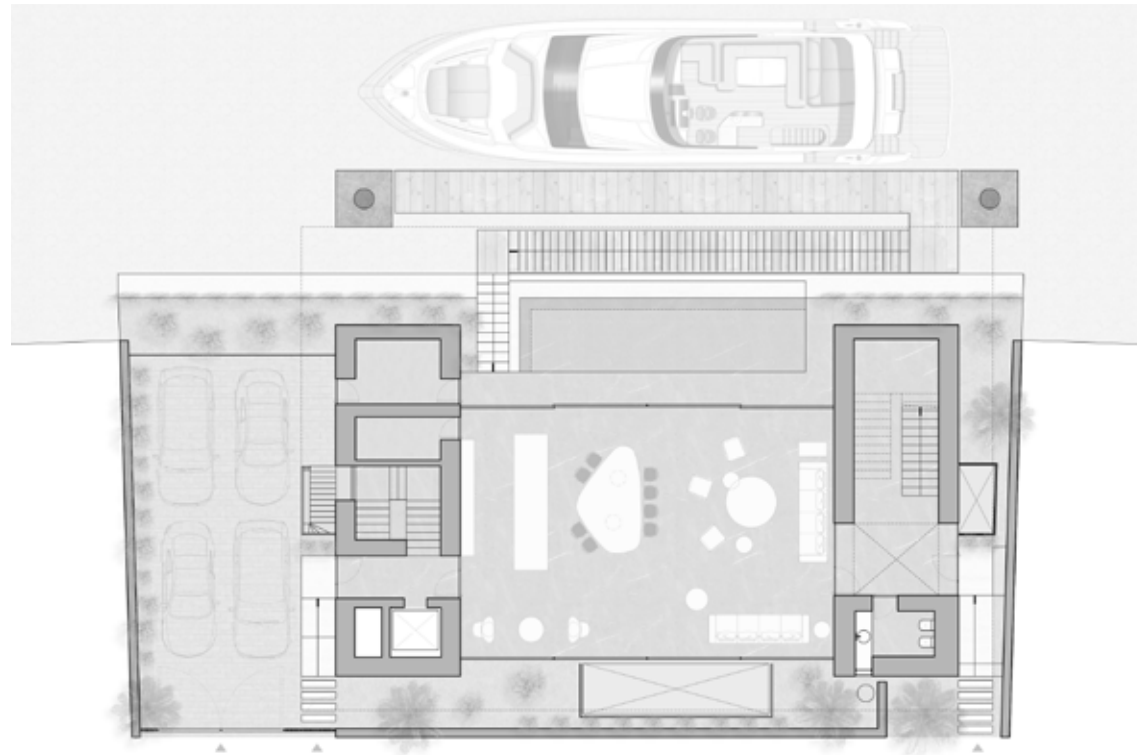
CANAL VILLA

Status: in progress
Date: 2019 -
Area: 980 sqm - 10,500 sq.ft.

Derived from the dhow boat building roots of Dubai, the architecture is conceived as a contemporary expression of nautical design, finely crafted and bespoke. Located on a narrow plot over-looking the canal, with views of the city and Burj Khalifa, the design is expressed as cantilevered floor plates, bronze and wood slabs lightly suspended over the water. To both sides are placed massive structural, service and circulation cores, seemingly effortless in achieving the 10m cantilever and framing the space between as a series of open 'rooms', maximizing the visual connection to the water. Suspended cast glass fins ensure maximum natural light and privacy to the interior spaces.

The accommodation is spread over four levels: the main family living space on ground floor acts as a deep-set window overlooking the canal. The full-length infinity pool links the interior space physically and visually to the water, with direct access to the private yacht moored in front. Full-height openings on both sides ensure the inside-outside connection and natural lightness of the space. A full basement service level is contained below ground with guest suite and cinema. The first-floor master bedroom spans the full width of the canal side, with private terrace and roof garden. The upper level contains the entertainment space with retractable sliding openings to create an inside-outside room, an open terrace with impressive views of the city skyline.

Naturally crafted bespoke materials reinforce the concept of the villa – stone floors extending out from the interior to terraces, wood ceilings inside and out with minimal integrated lighting, bronze aluminium crafted elements to the exterior and cast glass fins lightly connected to the slab edges, reflecting light and providing a sense of privacy and openness. The minimal garden space on ground level is supplemented on the upper levels, with local plants and trees acting as natural buffers to the exterior, balancing the purity of the architectural expression and creating a natural microclimate of planted slabs suspended over the water.



Ground floor plan



Facade detail



Family living



Master bedroom



Master bathroom



Villa K
Al Muntazah . Abu Dhabi . UAE

VILLA K

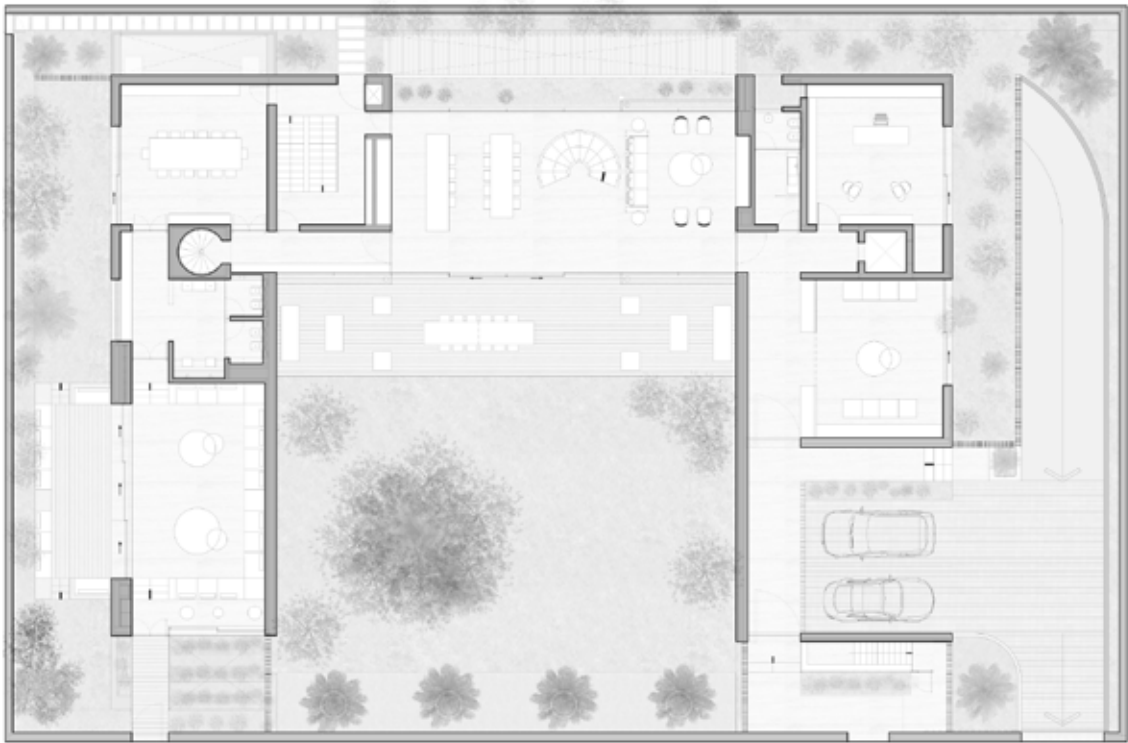
Status: concept
Date: 2019
Area: 2,000 sqm - 21,500 sq.ft.

In the traditional Arabic context of a city within a city, the courtyard plays a vital role, modulating and protecting internal private space. This paradigm is explored in the concept for this private villa in Abu Dhabi.

Located in a suburban context of varying architectural styles, the villa presents itself as a pure mostly closed volume to the sides and rear, the rectangular form completed by a mashrabiya screen. Within this form, centrally located is the courtyard garden, a private oasis within the city. The creation of a microclimate of shade and landscape forms the heart of the villa, incorporating traditional passive cooling techniques of air movement, water cooling and shading to reduce the ambient temperature, and establish privacy, openness and dappled natural light. A large shaded terrace extends the full width of the garden, emphasizing the inside-outside relationship of living spaces and garden.

The central garden is the preserve of the ground floor living spaces, while the secondary spaces of majlis, dining and office/ library are orientated to the periphery, creating smaller private patios. The central living space connects to the first-floor family lounge by a sculptural spiral stairs. The bedrooms are placed around private courtyards, with only the master bedroom enjoying private views of the courtyard. Below ground a full basement level contains the functions that service the villa, with circulation and access carefully managed to maximize efficiency and ensure family privacy. At the upper level a gym, salon and massage room are contained within a screened volume, also containing service and MEP functions.

Natural materials are employed to reinforce the concept of the villa - local natural stone walls to the boundary and garden, light cut stone placed vertically wrap the bedroom level, whose volume sits lightly over the ground floor, creating shaded walkways along the perimeter. Mashrabiya screens of bronze aluminium provide privacy and modulate light to the interiors which are warm and filled with natural light.



Ground floor plan



Courtyard garden



Formal majlis



Master bathroom



Family living



Road side view



Courtyard Villa
Dubai Hills Estate | Dubai | UAE

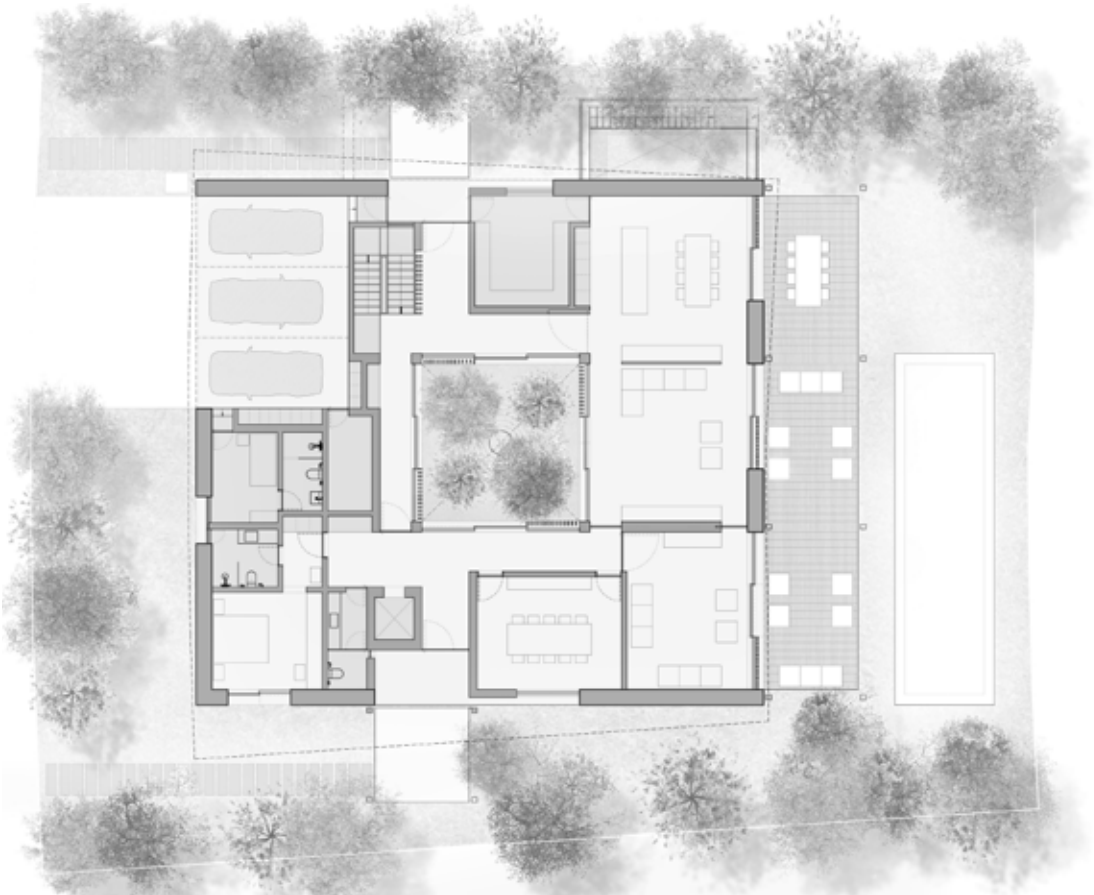
COURTYARD VILLA

Status: under construction
Date: 2018 -
Area: 1,850 sqm - 20,000 sq.ft.

Located in the developing luxurious residential suburb of Dubai Hills Estate, the design of this 4 bedroom villa was informed by particular Vasthu principles as required by the client. These include the integration of architecture and nature, strong geometry and symmetry, directional alignments for entrances and other aspects, a central space open to the sky, and peripheral zones assigned to specific use in order of orientation.

The house presents a strong mostly closed presence to three of its exterior facades, with bush hammered stone walls appearing to slip apart to create a tectonic variety of openings, to garage, family & guest entrances on ground floor and to bedrooms and office on the first floor. This changes to the garden facade, which opens up towards the garden and parkway beyond. Reflecting the principles of both Indian and Arabic traditional courtyard houses, the villa is very much internal and private, with internal movement and space oriented around the 6x6 m internal courtyard, which is open to the sky and has a central water feature (vastu significance).

Pure natural materials are employed to reinforce the concept of the house: bush hammered stone walls, natural wood screens, stone floors which reflect and contrast with the landscaping of local varieties of palm trees, olive trees and planting.



Ground floor plan



Road side view



Family lounge



Garden view



Family living



Garden Villa
Dubai Hills Estate , Dubai , UAE

GARDEN VILLA

Status: in progress
Date: 2018 -
Area: 2,000 sqm -21,500 sq.ft.

A series of natural stone walls are arranged in response to the site conditions, with controlled views to both sides screening the interior from the strongest sunlight and from overlooking by the large neighboring villas, and focusing the view towards the pool and garden which links visually with the green space beyond and acts as the view.

The program is divided into three main volumes set between the walls: formal lounge open to the pool and garden, and guest suite; formal dining on view and office, with a grand guest entrance between; and family areas, with the scale of the spaces associated with their use. On the eastern side of the site, screened by a row of trees is the ramp to the basement, and covered surface parking leading to the family and service entrances, both sides of an elongated bar of service spaces, with the kitchen in the center as the heart of the house and the family lounge and dining open on the garden, connecting to a pergola covered garden and pool terrace. Rooms are generously proportioned in formal areas, linking to covered terraces, while the family rooms are more homely intimate spaces.

On first floor, spacious bedroom suites are positioned to both sides, with the family room and terrace to the center. The luxurious master suite occupies the western volume, opening onto a large terrace overlooking the pool and garden. The gym and spa occupies the roof terrace to take advantage of the view over the green space. The basement has 5 parking spaces, with a sunken courtyard bringing natural light to the parking area. The cinema and service spaces are positioned to allow natural light through light wells and skylights. The cinema, kids den, and ample storage areas are located here with easy access from the pool area.

The material proposed are natural, refined and elegant: local stone walls, textured off-white plaster, champagne bronze anodized windows with bronze anodized louver fin screens for shading & privacy. The elegant and refined interior material palette will be developed along with the interior spaces.



Ground floor plan



Family lounge terrace



Road side view



Family lounge



Master bedroom



Adobe Villa
Al Khawaneej . Dubai . UAE

ADOBE VILLA

Status: under construction
Date: 2015 -
Area: 850 sqm - 9,150 sq.ft.

A contemporary farmhouse villa carefully placed on its large site so as to be protected from the elements and be in harmony with its surroundings.

Entering along a winding road, the villa emerges from the sand dunes, quiet, unassuming but also with a grand presence. Separation of private and public space was achieved with a travertine feature wall that pierces the entire length of the villa; the interior spaces are carefully orientated to the exterior with large shaded openings and patios.

The natural unembellished palette of materials is based on the use of adobe, an ancient natural form of construction using sun-dried bricks of sand and clay, creating a contemporary vernacular aesthetic.



Pavillion



Dining



Entrance



Palm Villa
Palm Jumeirah, Dubai, UAE

PALM VILLA

Status: completed
Date: 2013 - 2017
Area: 1,500 sqm - 16,150 sq.ft.

Situated on the palm's shore, Palm Villa projects weight and stance in a manner that asserts its presence. Raw materials selectively cover surfaces of the façade, complementing minimalist gestures that enhance the interior environment and therefore elevating the resident's experience. With a cascading waterfall into a shore side pool; Palm Villa 02 is built around a central courtyard allowing all rooms an unhindered view of the vast Arabian Gulf.



Roof terrace



Road elevation



Entrance



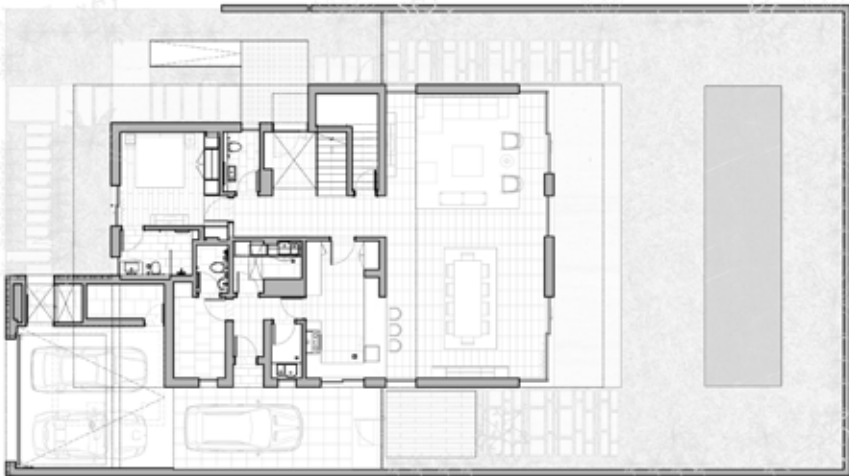
Ghaf Villas
Ghaf Hills . Dubai . UAE

GHAF HILLS

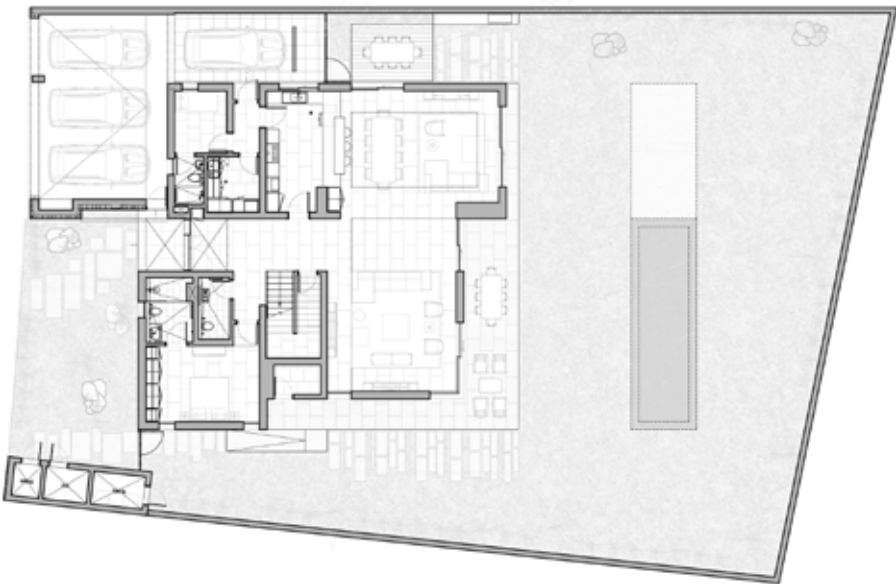
Status: ongoing
Date: 2018 -
Area: 4 bed 386 sqm - 4,155 sqft | 5 bed 456 sqm - 4,908 sqft | 6 bed 572 sqm - 6,157 sqft

Developed with Majid Al Futtaim, Ghaf Hills is the very latest mixed-use community in Dubai. Offering luxury resort-like living around a recreational lagoon with sandy white beaches this is set to become one of the most well integrated and very best lifestyle communities in Dubai. The new community will provide walkable neighbourhoods featuring high-quality villas, townhouses and apartments. These are connected by pathways, natural, open spaces and parks, complemented by vibrant retail, dining, leisure and cultural options.

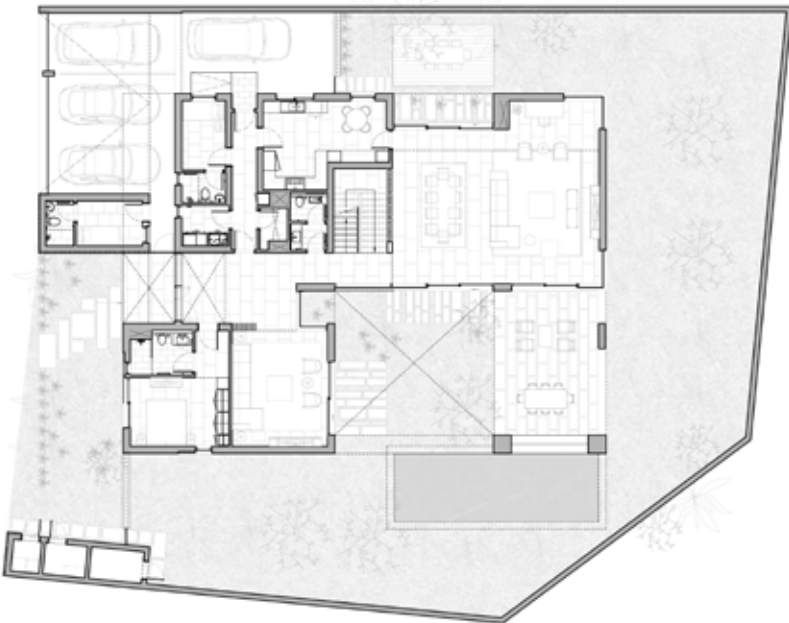
Designed as an exclusive enclave providing the perfect getaway from busy city life, offering the perfect lifestyle for the modern family. With high-quality four, five and six-bedroom villas, nature-inspired outdoors and resort-style amenities including swimming pools, community and fitness centers. The villas were designed to maximize efficiency while still achieving a level of quality and minimal luxury, with large living areas overlooking private gardens and pools, and bedrooms all with terraces to ensure a strong connection to the exterior landscape.



4 bedroom villa - Ground floor plan



5 bedroom villa - Ground floor plan



6 bedroom villa - Ground floor plan



Zanzibar Villa
Zanzibar . Tanzania

ZANZIBAR VILLA

Status: concept
Date: 2012
Area: 810 sqm - 8,700 sq.ft.

Located on the virgin beaches of East Africa, along the seaweed fields and its pickers, Stills applies repetitive elements derived from the canes and strings used in seaweed farming.

A strong relationship between indoor and outdoor living was maintained in balance, giving its enclosed spaces a sense of translucency. Zanzibar's rich local crafts and colonial influences resonated throughout the concept, further cementing the villa's connection to its locus.



Villa overview



Entrance



Native Residences
Muscat . Oman

NATIVE RESIDENCES

Status: concept
Date: 2012 -2013
Area: 5,000 sqm - 53,800 sq.ft.

Scattered across the Omani landscape, massive forts stand the test of time as a symbol of what once was. Reinterpreting the interlocking volumes of a fort to complement the 21st century cityscape allowed the building to divide its spaces while giving off a stance of weight and authority.

Traditional Omani architecture, and Islamic architecture in general, has been influenced by the continuous struggle between the public and private space. Coupled with courtyards and Mashrabiyas, Native is able to seamlessly separate the building's executive quarters from the rest of its commercial areas.



Road side view



Aerial view



MEDICAL



Amman Hospital
Amman . Jordan

AMMAN HOSPITAL

Status: ongoing
Date: 2017 -
Area: tbc

Located in Abdoun, Amman, with panoramic views from its hillside site towards the city, the project sought to establish visual connections to the greenfield site. There is a wealth of evidence to suggest that a well-designed hospital environment can improve recovery times and contribute to better outcomes for patients, while providing a more enjoyable workplace for medical staff. The ambition was to design the hospital as a natural place for all those who use it.

Everyone - whether a surgeon, nurse, or porter - is regarded as a 'partner' in the delivery of health care, with a common goal of promoting patient well-being. Divisions between departments are sought to be minimized to ease the stress involved in consultation and treatment for patients and reduce walking distances for staff. A double-height atrium, containing a café, nurses' station and reception point, provides a social focus for patients and staff alike.

Throughout the hospital there is an emphasis on natural light and views: recovery spaces on the lower level are fully glazed, as are the operating theatres, and all look out across the surrounding green hills. Balconies line the building's edges, oriented to maximize views across the surrounding countryside. Sympathetic landscaping further emphasizes the therapeutic natural environment - an overall approach very different from more familiar, institutional hospital surroundings.



Hospital overview



Hospital entrance



Typical patient room



Membrane Medical Center
Motor City . Dubai . UAE

MEMBRANE MEDICAL CENTER

Status: completed
Date: 2015 - 2017
Area: 2,300 sqm - 25,000 sq.ft.

This G+1 Motor City Day Surgery Center facilities were arranged around a central sky lit atrium, creating an intuitive flow for visitors to circulate through and navigate easily. The medical program includes 18 outpatient clinics, 2 operation theatres and 8 patient beds. This central atrium provides natural light to the first floor patient corridor, with a frosted glass for privacy purposes.

A translucent skin on the main road façade and GRC cladding facing the residential area, the day care surgery center façade wraps around its components to create a singular entity. Careful emphasis was placed on materials selection, with a subtle game of yin and yang, white oak and frosted glass to create an atmosphere of calm serenity and healing.



Facade detail



Waiting area



Typical patient room



GF

- ← LABORATORY
- ADMISSION DEPARTMENT
- PEDIATRY
- ← PHARMACY
- CAFE
- ← ADMINISTRATION OFFICE

01

- PLASTIC SURGERY AND COSMOLOGY
- ← CONFERENCE ROOM
- ← HOSPITALIZATION
- PHYSIOTHERAPY
- ← CAFE
- HOSPITALIZATION

INTERNATIONAL CITY HOSPITAL

Status: under construction
Date: 2019 -
Area: 15,000 sqm - 16,000 sq.ft.

This project, located in Warsan Village, International City, Dubai, involves the adaptation and re-use of an existing building intended for a retail use into a hospital. The design for this 135-bed hospital takes advantage of a large central spine, where all of the public functions, reception areas, lounges and pharmacy are located. Light filters into the space from skylights above, creating an inviting and pleasant atmosphere, enhanced by the use of natural materials, bespoke furniture and lighting design.

The program of this 15,000 sqm hospital includes Out Patient Department, Emergency Room, MRI and physiotherapy on ground floor with Operating Theater, 25 single patient room, 15 double bed and 10 four-bed ward on first floor. The existing fenestration is fully optimized to maximize natural light which promotes wellness in patients. A grid circulation pattern area which adapts to the building form is utilized to facilitate user circulation from one department to another, in an intuitive way that reduces the reliance on wayfinding signage.

The program of works is arranged into 3 phases; demolition works, structural modification works and fit-out, with the facility expected to open in 2020.



Consultation room



Waiting area



Typical patient room



nanoM

SPORTS MEDICAL CENTER

Status: completed
Date: 2016 - 2017
Area: tbc

Located in Dubai with panoramic views towards the city, the project is a high-end sports medical center, catering for both high performance athletes and the general public. There is a wealth of evidence to suggest that a well-designed environment can improve recovery times and contribute to better outcomes for patients, while providing a more enjoyable workplace for medical staff. The ambition was to design the center as a natural place for all those who use it. Everyone who uses the center is regarded as a 'partner' in the delivery of health care, with a common goal of promoting patient well-being. Divisions between departments are sought to be minimized to ease the stress involved in consultation and treatment for patients and reduce walking distances for staff.

Throughout the medical center there is an emphasis on natural light and views. The interior spaces are designed to create an efficient flow to reduce patient waiting times and ensure the highest level of service. The interior design is clean and efficient with natural materials, sympathetic lighting and patterns introduced to create a calm welcoming interior.



Typical consultation room



Specialty department



Views Medical Center
Marina . Dubai. UAE

VIEWS MEDICAL CENTER

Status: completed
Date: 2015 - 2016
Area: tbc

Located in Dubai with panoramic views towards the city, the project sought to establish visual connections to the site. There is a wealth of evidence to suggest that a well-designed environment can improve recovery times and contribute to better outcomes for patients, while providing a more enjoyable workplace for medical staff. The ambition was to design the center as a natural place for all those who use it. Everyone who uses the facility is regarded as a 'partner' in the delivery of health care, with a common goal of promoting patient well-being. Divisions between departments are sought to be minimized to ease the stress involved in consultation and treatment for patients and reduce walking distances for staff.

Throughout the medical center there is an emphasis on natural light and views. The interior spaces are designed to create an efficient flow to reduce patient waiting times and ensure the highest level of service. The interior design is clean and efficient with natural materials, sympathetic lighting and patterns introduced to create a calm welcoming interior.



Typical consultation room



Department corridor



Typical consultation room



AFRICAN CLINIC

Status: concept
Date: 2018 - 2019
Area: 400 sqm - 4,300 sq.ft.

Due to its location in Somaliland, the response was to create a modular arrangement of rooms around a central shared courtyard, a sanctuary within. The building sits on a plinth in order to respond to ground conditions. The rooms and central courtyard are unified by a large floating roof canopy structure, screening the medical clinic and its outdoor spaces from strong sunlight, whilst also drawing in air and naturally keeping its temperature cool, a low cost and environmentally sustainable solution that can be flexible and adaptable, to recreate in multiple locations.

An external corridor wraps around the courtyard linking the rooms. Above this corridor lies a services zone that serves each room that is screened from views from both the outside and the internal courtyard. The program is divided into three parts, public, treatment and back of house, set around the courtyard, a social space in which patients enter, wait and circulate. The public entrance is at an opposite end to the staff entrance, ensuring a clear divide between public and private. A rigid 3m grid spans the length of the building, dividing rooms and supporting the roof canopy above. This grid ensures lots of repetition and ease of construction by local African teams.

The material proposed are natural, unrefined brick or rammed earth walls, produced on site, exposed cast in-situ concrete, and locally sourced wood doors and screens.



Waiting area



Courtyard



Business Bay Medical Tower
Business Bay . Dubai . UAE

BUSINESS BAY MEDICAL TOWER

Status: concepet
Date: 2016
Area: 26,000 sqm - 280,000 sq.ft.

Located in the Heart of Dubai's new business district, the G+19 tower houses a specialist medical clinic at its podium catering to the elderly population within the region. The tower consists of luxury-serviced apartments with specialist care facilities.

To maximize the GFA while working within strict plot parameters the tower seemed to be too heavy. The large tower mass was broken down by composing multiple volumes using varied languages; The horizontally clad base was used fin shaped brown terracotta louvers which allows views out of the medical facility while ventilating the car par below. The vertical tower masses were designed with two shifting volumes, one with a Glass curtain wall system along the northern elevation overlooking the Dubai Canal and a more solid GRC clad mass with deep set openings towards the East-South Elevations. The second volume using minimal glass curtain wall system with an offset outer structure clad in terracotta louver varying in density to allow for views beyond while reducing heat gain on the overall mass. This mass also meets the ground creating an entrance pocket behind it.



Overview



Overview



ANIMAL WELFARE AND ENRICHMENT CENTER

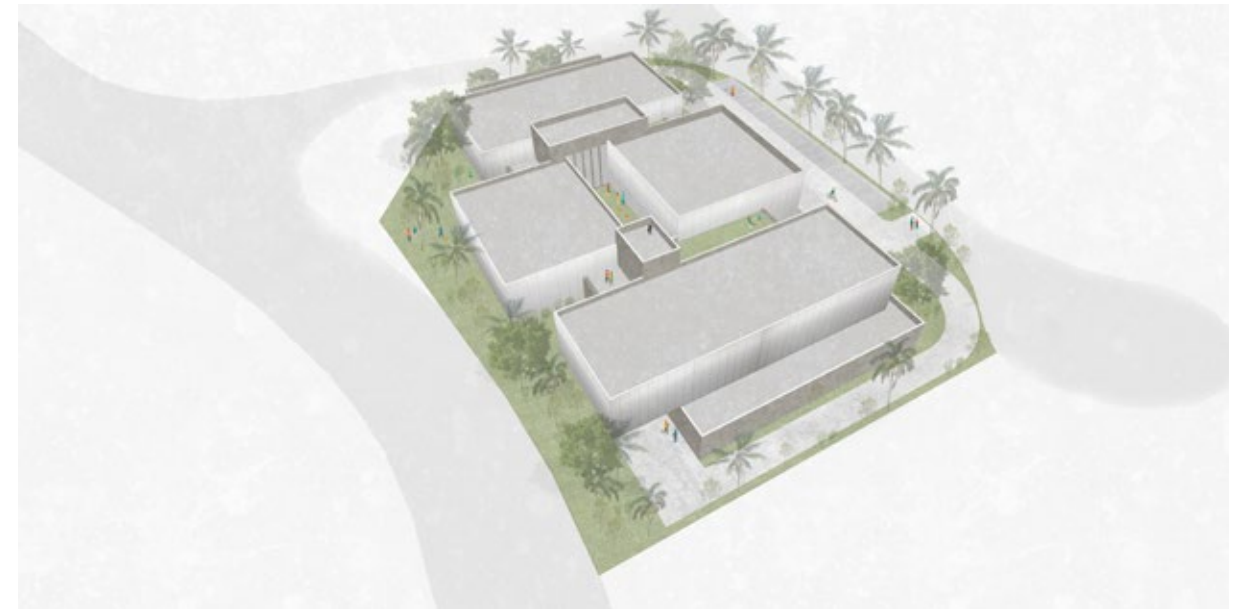
Animal Welfare & Enrichment Center
Dubai, UAE

ANIMAL WELFARE & ENRICHMENT CENTER

Status: ongoing
Date: 2019 -
Area: x,xxx sqm - xx,xxx sq.ft.



Overview



Overview



Exterior view



EDUCATION



Djibouti ISA School
Nagad, Djibouti

DJIBOUTI ISA SCHOOL

Status: complete
Date: 2016
Area: 40,000 sqm - 430,000 sq.ft.

ISA is located in the Nagad area of Djibouti, adjacent to the Italian Military Base. The campus itself offers a purpose built school, combined with shaded areas for families to visit, green fields for football/soccer, and finally 2 cafeterias to serve students healthy meals each day. Every classroom is equipped with the latest technologies, including computer access with WiFi capabilities. ISA also has its own full time nurse to care for students.

Currently the school is comprised of 4 “wings” of classrooms and an administrative building. The Administration Building is where we receive parents and visitors. Within the four classroom wings are the Kindergarten classes, Grades 1 through 8, a science lab, an English support lab, computer lab, library and a multipurpose room. Additionally there are 2 cafeteria areas and a nurse’s station.

In such a young economy the need for a well-rounded and educated youth is of deep importance. The international School of Africa aims to open the minds of its students to new horizons. The school has been designed with a multiphase/expandable approach, allowing it to operate at a smaller size and grow at a comfortable pace. This was achieved by using a light gauge steel construction method.



School aerial view



Entrance view



Courtyard



Khalifa City Nursery
Khalifa City - Abu Dhabi - UAE

KHALIFA CITY NURSERY

Status: concept
Date: 2018
Area: 1,200 sqm - 13,000 sq.ft.

The concept is to establish connections with the city, permeable, transparent and lifted from the ground so that the city can enter to become a place of exchange and connection with the city and local neighborhood. Classrooms for younger children located on ground floor are bright, spacious with large windows on the central courtyard, an internal shaded garden with a large tree around which the children can play and interact with nature.

To the edge of the courtyard is a library that goes up to the roof terrace and is open to everyone. In addition to paper books and virtual systems, the drawings, writings and memories of the pupils will be preserved here. The roof terrace will be the place where the children cultivate their imagination. Here a vegetable garden, laboratories of botany, science or elementary astronomy shaded by pergolas, a heliothermic machine that captures solar energy, a meteorological observatory in which to study the seasons, to fully engage the environment and senses.

The central courtyard is multifunctional, the living heart of the project - an entrance hall, a space of celebrations, a play area, an informal meeting space, a dining room and a garden capable of creating its own microclimate. Enclosed and mechanically ventilated during the hot summer, skylight openings will provide stack effect natural ventilation during the cooler winter. Water fountains, an old Arabic technique will enhance the passive cooling effect.



Classroom



Nursery entrance



Courtyard



LANDSCAPE



Tashkeel Garden
Nad Al Sheba, Dubai, UAE

TASHKEEL GARDEN

Status: completed
Date: 2017

LOCI Architecture and Design were commissioned by Tashkeel to renovate the former skate park adjacent to the organization's main art center. The existing park lacked a sense of order or defined landscape, but was home to a number of existing mature Ghaf trees, which formed the focus of the design. The garden referenced traditional Japanese Rock Garden; typically a wall-enclosed garden, which includes carefully arranged rocks, water features, and gravel to represent water ripples. LOCI took this inspiration and combined it with patterns, colors and textures from the local Emirati context to create the new Tashkeel Zen Garden.

The design centered on the natural elements of earth, fire, wind and water, evoking the concept of harmony, space, reflection, and the human self. The design incorporates the textures of sand grains, wooden boards, plant leaves and stones, reflecting each material's natural characteristics. The garden landscape includes different varieties, textures and size of desert vegetation suitable for Dubai's warm climate, complementing each other in their composition. There is a sense of timelessness imbued in the design concept, with space and time given to explore, meander, wander and pass the time peacefully and meditatively, to enhance and compliment the artistic functions of the Tashkeel center. All elements in the Garden are displayed in their essential shapes and forms: dunes, grasses, trees and stones reflect their natural state.

Outlining the garden and identifying from its surrounding neighbourhood, a local stone wall was designed from handpicked stones from Ras Al Khaima's mountain base, thus ensuring that the colors matched the sand-filled back-lit multi-polycarbonate "windows" in the walls, breaking down its rigidity to create moments of light. A fluid circulation route passes through the garden, offering the visitors a transition through the various natural spaces, navigating via radial paths to reach the five main functional zones. The centerpiece is a sunken seating area, created from cast-in situ polished concrete and layered with purple cushions to match the hues of local plants and includes a central water feature which trickles on Hatta grey stones, with water one of the elements that portrays purity and reflectiveness.



Dunes



Sunken seating area



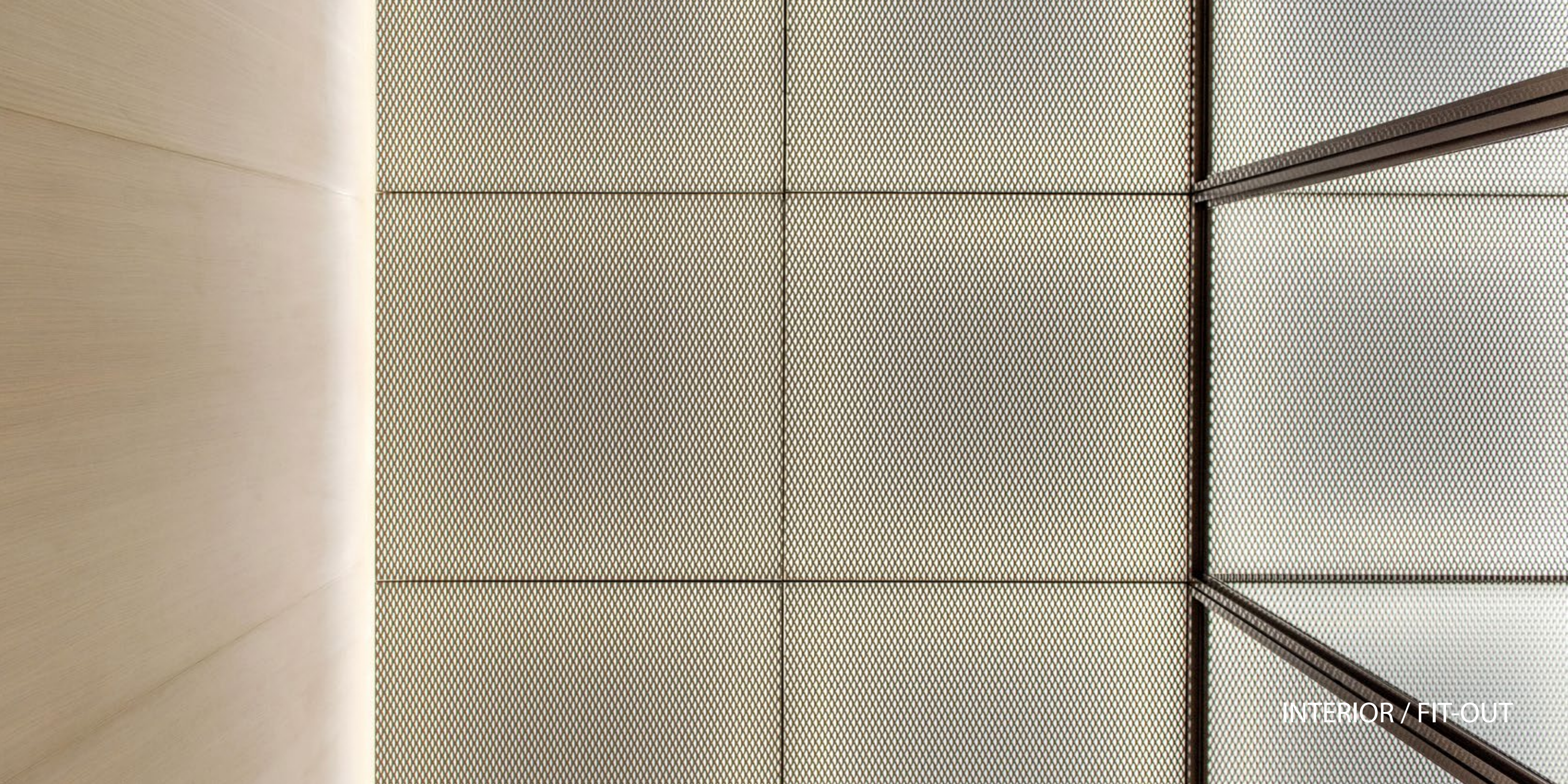
Pendulum



Local plants



Local colour palette



INTERIOR / FIT-OUT



Emirates Towers Office
DIFC . Dubai . UAE

EMIRATES TOWERS OFFICE

Status: completed
Date: 2017 - 2018
Area: 1,000 sqm - 10,800 sq.ft.

Located in the prime Emirates Towers, Dubai, this full floor office fit out for a prominent client has been conceived as a pure, timeless, minimal contextual interior. Solid white oak joinery elements are placed to subdivide the floor plan, conceal the building structure and contain services and storage. Bespoke aluminium partitions, with minimal frames, enclose the office and meeting rooms but allow views and light to penetrate through to the interior. Light coloured teak wood stone floors ensure a homogenous and light space. Green walls and art works are natural additions to the minimal aesthetic.

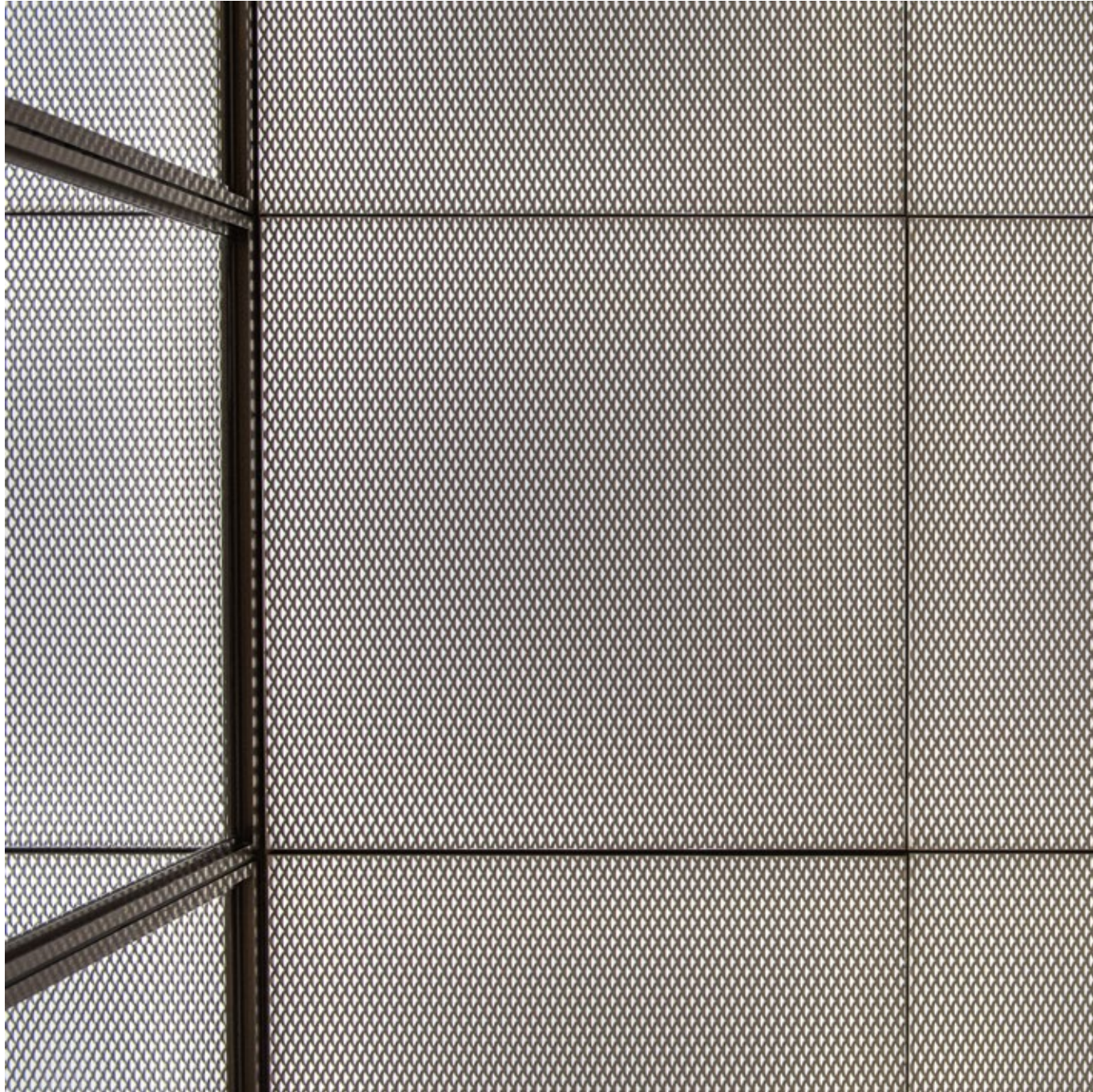
The ceiling of light champagne aluminium mesh has integrated led lighting so each panel glows with diffused light, lighting the space in an elegant and streamlined way, eliminating the need for suspended lighting. Contemporary crafted wood furniture, light sand coloured rugs and bespoke joinery combine to create a minimal but comfortable interior that reflects the needs and profile of the client.



Reception



Offices



Bespoke ceiling and partition system



Chairman waiting area



Meeting room



Special Guest Area UAE Pavillion
Expo 2020, Dubai , UAE

SPECIAL GUEST AREA UAE PAVILLION

Status: completed
Date: 2019 - 2021

A minimal majlis design for the EXPO 2020 Special Guest Area within the Santiago Calatrava designed UAE pavilion where guests are immersed in calm tranquility reflecting traditional UAE values of Humility, Community, Equality, Hospitality, Respect and Unity.

The concept was to move away from lavish and extravagant majlis design typically seen by offering an alternative more grounded, locally inspired concept that speaks to traditional UAE socio-religious and human-centric values.

The aim was for guests to feel relaxed within a communal setting in tune with themselves and their senses while enjoying a contemporary majlis with meaning and value.

The scale and proportion of the EXPO 2020 Special Guest Area establishes a relationship between guests and encourages informal interactions and inclusivity.

An aspiration within the design is the establishment of a new standard for Emirati hosting and protocol experience which better reflects the national values of community and friendship.



Majlis



Majlis



VIP restrooms



Conference Room



Informal lounge area



District 1 Clubhouse
MBR City, Dubai, UAE

DISTRICT 1 CLUBHOUSE

Status: ongoing
Date: 2021-
Area: 2,285 sqm - 24,500 sq.ft. and landscape 4,000 sqm - 43,000 sq.ft.

The existing building is commercial in nature and visual aesthetic. The façade, landscape and interior are modified to make it fit for its new purpose. The existing façade is retained with some additions of screens where required to add privacy and shading to the interior, and adjust it visually from its commercial source and towards a more hospitality-oriented aesthetic. Use of natural materials of timber screens and landscape provide contrast with the white and glazed façade.

The kids playroom and entertainment areas are located on the ground floor providing a dynamic focal point from the garden. An enclosed kids playroom and set-up with pivoting timber screens allows for different scenarios and the flexibility to organize quieter functions in close proximity of the kids playroom. The aesthetic here is comfortable, joyful and relaxed. Light fabrics and materials are blending here with bespoke wood furniture and both minimal and soft lighting.

The upper-level fitness centers sit over this main lounge / restaurant, accessible via the existing lift and staircase. The main gym area is a bright open space with views to the terrace and pool. The main workout area has been divided into zones of different fitness functions, heavier training to the back, and lighter cardio to the front with views over the garden and lagoon beyond. The materials darken slightly here to create a more subdued but light-filled interior. The gym also features a large group class studio and a smaller studio that allows for privacy during individual workouts, personal trainer sessions or physiotherapy.

The landscape is conceived as a series of layers – water, planting, trees and terrace. The soft outer layer of landscape wraps the entire building, locally adapted plants, grasses and trees enveloping the white and glass structure. The clubhouse garden has a lagoon, paddle pool and kids splash pad. Clusters of landscape are screening a variety of different seating and lounge areas. Along the edge of the resident's lounge is a strand of stone paving outdoor lounge with wood pergola shading, emphasizing the inside outside connection.



Pool



F&B space



Gym



Forge
Fitness Performance

Forge Fitness
Meydan, Dubai, UAE

FORGE FITNESS

Status: completed
Date: 2021 - 2022
Area: 2,000 sqm - 21,500 sq.ft

Located in the developing neighbourhood of Meydan, this Boutique Personal Fitness Studio is set within the ground floor of the new G+4 Taupe Residence Development designed as an efficient, pure form derived from its site, a clean mass with carefully carved openings and a durable materiality. The space for the fitness studio overlooks Meydan Golf Course to the east, with views towards the City of Dubai and Downtown to the west. The façade of the Fitness Studio is integrated with the Residences' pure jura stone base and lintel and glazed façade with glazed entrance door ensuring maximum light and visibility.

The personal fitness program by Forge Fitness required a certain spatial arrangement and circular functional flow in five stages: entrance, free weights, multifunctional monkey bars, resistance training and cardiovascular. There was also a functional program of bathroom, shower, reception and storage to be integrated within the compact space. To achieve the design brief the functions were all contained within a single central box which allows the required functional and spatial flow. The lighting concept was muted but warm with accent lighting on the equipment pieces and the ceiling design covered to reduce visual glare and distraction. A pure minimalist aesthetic was adopted with a material expression that is warm but neutral to ensure the emphasis remains on the boutique fitness equipment.

The materiality is light, natural and inviting with wood joinery walls and ceiling contrasting with the monotone fitness equipment establishing a clear hierarchy of function and creating calm space in which to train. A vertical fin wood cladding was selected for the central box with all doors and openings integrated so that when closed a pure wood volume remained. The interior of the wood box is lined with terrazzo, with wood joinery and glass. The ceiling is flat natural wood panels with recesses to neatly integrate the HVAC, lighting and services. Walls are in a light textured plaster with large circular mirrors to reflect controlled views. The floor is a light taupe colored rubber with seamless joints providing a light backdrop to the dark fitness equipment.



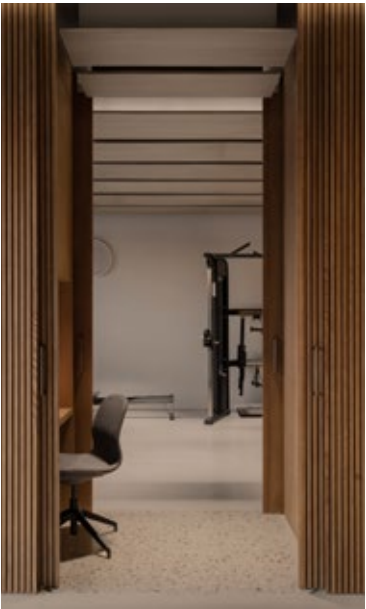
Facade integration



Gym



Dividing





Tesla Showroom
Sheikh Zayed Road . Dubai . UAE

TESLA SHOWROOM

Status: completed
Date: 2017
Area: 1,400 sqm - 15,000 sq.ft.

Tesla was founded in 2003 by a group of engineers who wanted to prove that people didn't need to compromise to drive electric – that electric vehicles can be better, quicker and more fun to drive than gasoline cars. Today, Tesla builds not only all-electric vehicles but also infinitely scalable clean energy generation and storage products. Tesla believes the faster the world stops relying on fossil fuels and moves towards a zero-emission future, the better.

To create an entire sustainable energy ecosystem, Tesla also manufactures a unique set of energy solutions, Powerwall, Powerpack and Solar Roof, enabling homeowners, businesses, and utilities to manage renewable energy generation, storage, and consumption. Supporting Tesla's automotive and energy products is Gigafactory 1 – a facility designed to significantly reduce battery cell costs. By bringing cell production in-house, Tesla manufactures batteries at the volumes required to meet production goals, while creating thousands of jobs.



Showroom shopfront



Showroom



Walter's Coffee Roastery
Dubai Mall . Dubai . UAE

WALTER'S COFFEE ROASTERY

Status: completed
Date: 2017

Walter's Coffee Roastery is the first coffee lab to specialize in daily roasted coffee established in Istanbul. Walter's is passionate about coffee and chemistry.

From extraction and brewing temperatures to espresso machine pressure and grinder configuration, the coffee is up to science. Walter's, aims to create a clean, minimalist and fresh environment for the customers. The use of laboratory-themed equipment shows their passion for coffee science.



Barista station



Barista station



EXHIBITION



MANE Beautyworld
Beautyworld , Dubai , UAE

MANE 2019 Reflection

Status: completed
Date: 2019

Childhood stories, recited by loved ones throughout life and carved into our memories, have the power to define us. However, childhood stories are a subjective reconstruction; where the real is mixed with fantasy. Where a drop of joy, fear, love or anxiety often grows and takes over ones entirety.

"Reflections" is an invite extended to our guests for accompanying our perfumers on a deep and personal journey. A journey that takes them back to their own childhood memories. In this exhibition 12 Mane perfumers, from around the world are exploring ingredients close to their hearts deeply rooted in their childhoods. They are using these ingredients to weave scents, which reconstruct the stories of their childhoods. These scents are the conduit, allowing visitors to reflect on their own memories and the distortions that lie within them.



Perfume display units



Exterior view

MANE 2018 AquaArabia

Status: completed
Date: 2018

Water has the power to transform the environment in which it is trapped or through which it flows. It is the basic element of life and a basic accord in perfumery that embodies freshness, lightness and coolness in the world of scents.

Nine Mane perfumers across three creative centers and continents, Paris, NYC and Dubai, were entrusted with the mission of exploring the gentle powers of water and its interaction with Arabian accords.

Using Mane's Aqua specialties and patented ingredients such as Red Algae Jungle Essence™ and Aqual™, the perfumers challenged the heavy and rich notes of Arabian perfumes. Unifying the contrasting elements of Aqua and Oriental to create ground breaking new notes.

The 12 creative works displayed in this exhibition represent dualism in all its glory, holding together in perfect but critical harmony Aqua and Arabia, AquaArabia!



Bespoke display pedestals



Rippling effect light fixtures

MANE 2017 Layertuitive

Status: completed
Date: 2017

Adjective – Layering what one feels to be natural and true with conscious reasoning.
Layering fragrances is an emerging trend amongst young Emirati men and women. This is done by applying different fragrances onto their attire to create a scent they can call their own.
Layertuitive explores some of the secrets behind these custom scents.
MANE fragrances interviewed Emirati Men and Women to understand the fragrances behind their layering. With this information in hand, their perfumers went to work by layering accords, or fragrance building blocks, to come up with exciting new creations that reflect the techniques and personalities of those that were interviewed.



Exhibition



Exhibition



Art of Scent
Dubai Mall . Dubai . UAE

ART OF SCENT

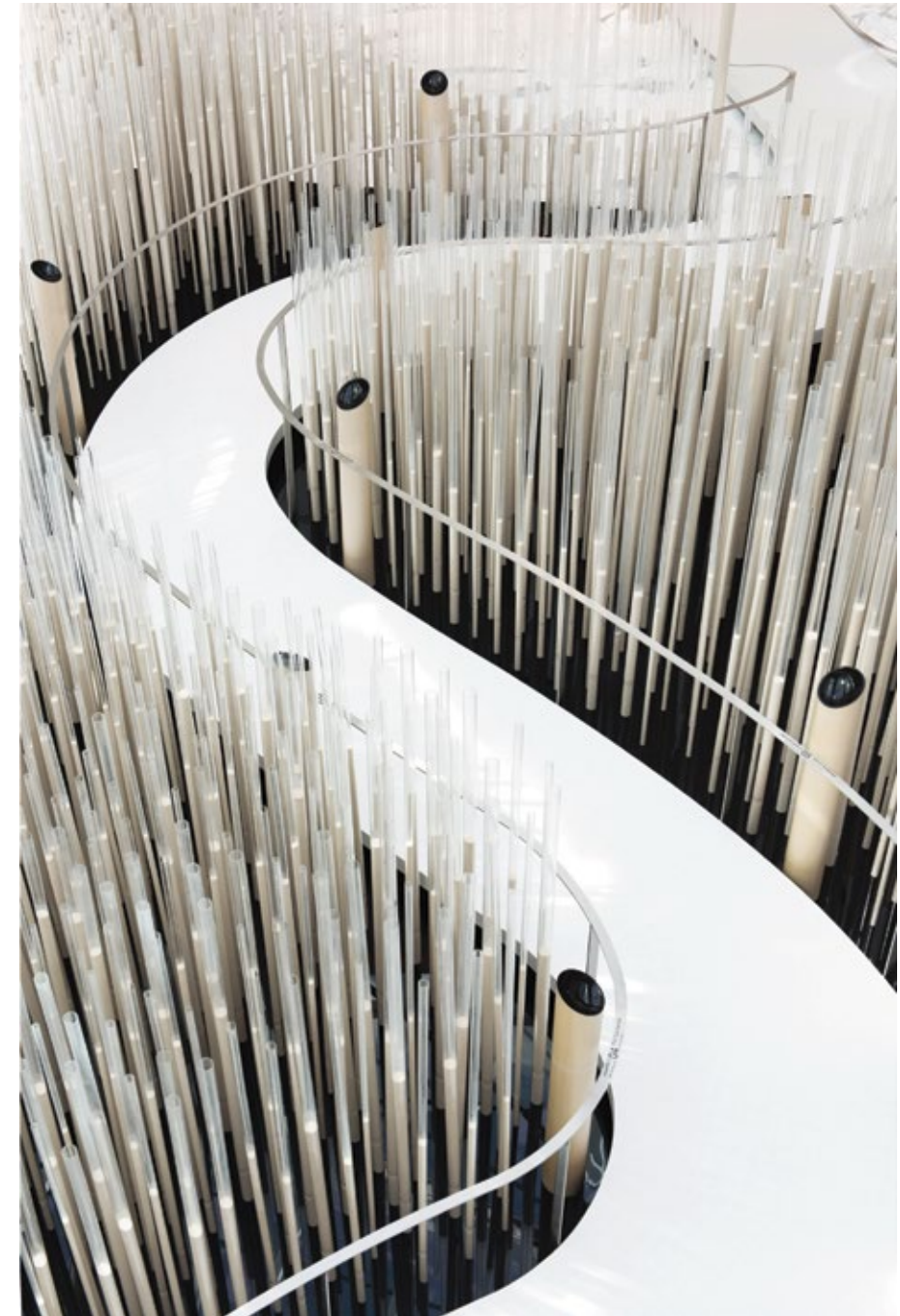
Status: completed
Date: 2018

The Art of Scent Dubai Mall is based on a very interesting premise: There is an art medium as unknown as it is important, a medium that is the equal of paint, clay, and music but that is only now starting to become understood — and the works created in it recognized as great works of art. That medium is scent materials. The works of art created in it are perfumes.

11 scents of art have been chosen from the select collections in Perfumery & Co. These collections are among the most refined and carefully curated in the world, and each work here is an example of an aesthetically significant, technically masterful work of scent art, created in styles ranging from Abstract Expressionism to Naturalism to Luminist Realism. They are the creations of significant contemporary artists from Thierry Wasser, Christophe Laudamiel, and Patricia de Nicolai to Daphnée Bugey and Jérôme Epinette.



Scent pedestals



Meandering path through scents



Abwab Pavilions
d3 , Dubai , UAE

ABWAB PAVILIONS

Status: completed
Date: 2015

Play and culture were at the heart of the concept. Both ideas, directly and indirectly, made their way into the final design and guided the thought process throughout. The focal material we are using is sand, and in itself, sand is a playful material. The way it moves, accumulates, shifts and the endless playful interactions we have with it growing up

Using sand to compose the skin contextualized the pavilions. An abundant yet underused local material, the sand was adapted to perform as intelligent climate control. A modern rendition of a traditional "Mashrabiya" and act as a veil between the exhibit and audiences before entry. Loci adopted new techniques and modelled real-size mock-ups to achieve the end results.



Pavilion



Pavilion



PRODUCT



Khatt
Traditional Cloth Hanger

KHATT

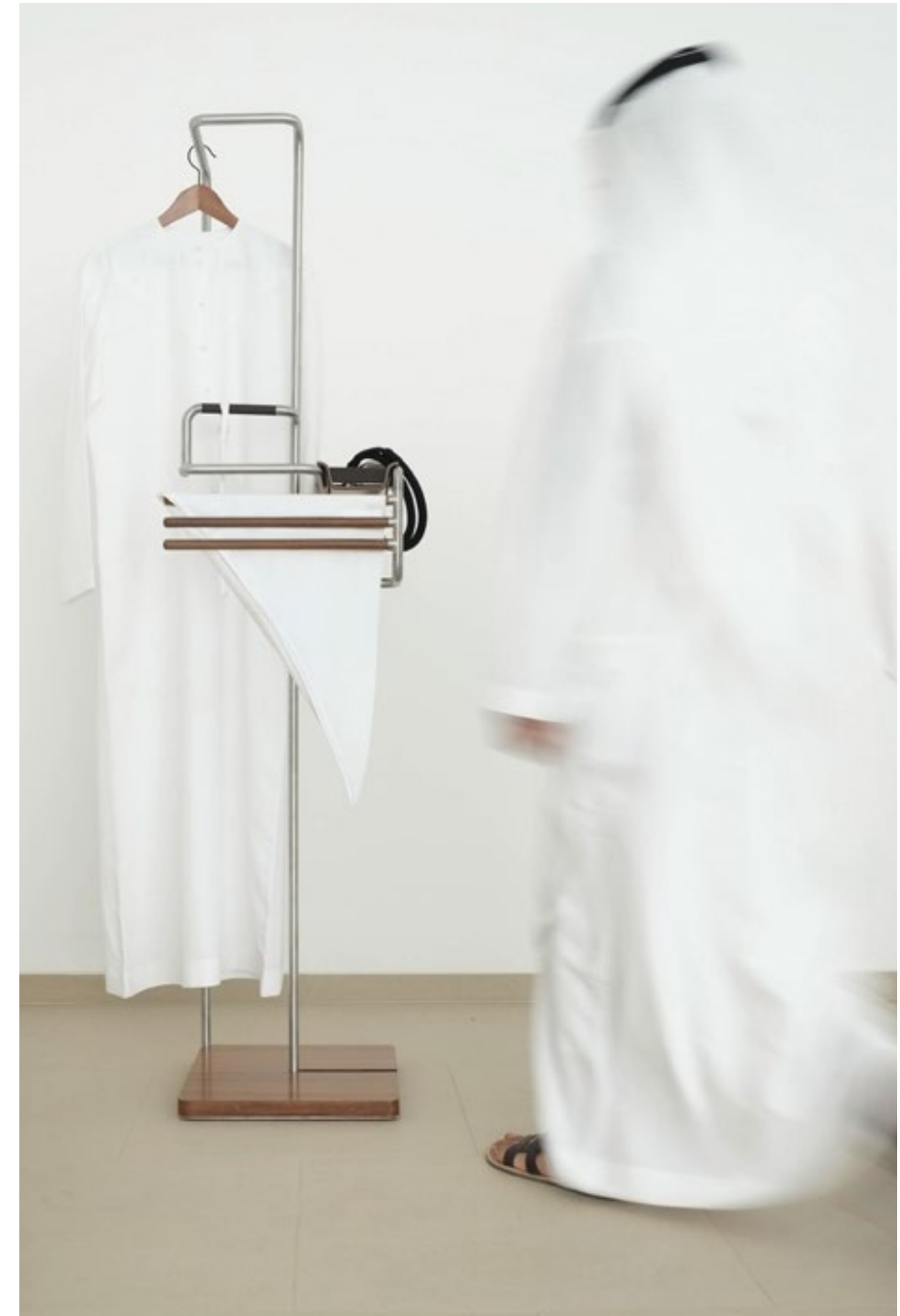
Status: completed
Date: 2014

Driven by its locus, "Khatt" came into realization to answer a regional need using local design, knowledge, and handcraft. Its minimalist dematerialized design approach allows Khatt to adopt to its surrounding seamlessly. With a focus on authentic materials, Khatt generates an exceptional interaction between walnut, leather and brushed stainless steel.

While designing and manufacturing Khatt, a lot of attention was given to making use of locally sourced materials and labour. Dubai has a rich tradition of dhow and boat builders. LOCI translated this time-honored handcraft into one of modernity. Funneling their passion driven skills into a product far away from their hulls and masts, Khatt came into realization.



Khatt



Khatt



D3 Please sit here
Modular seating

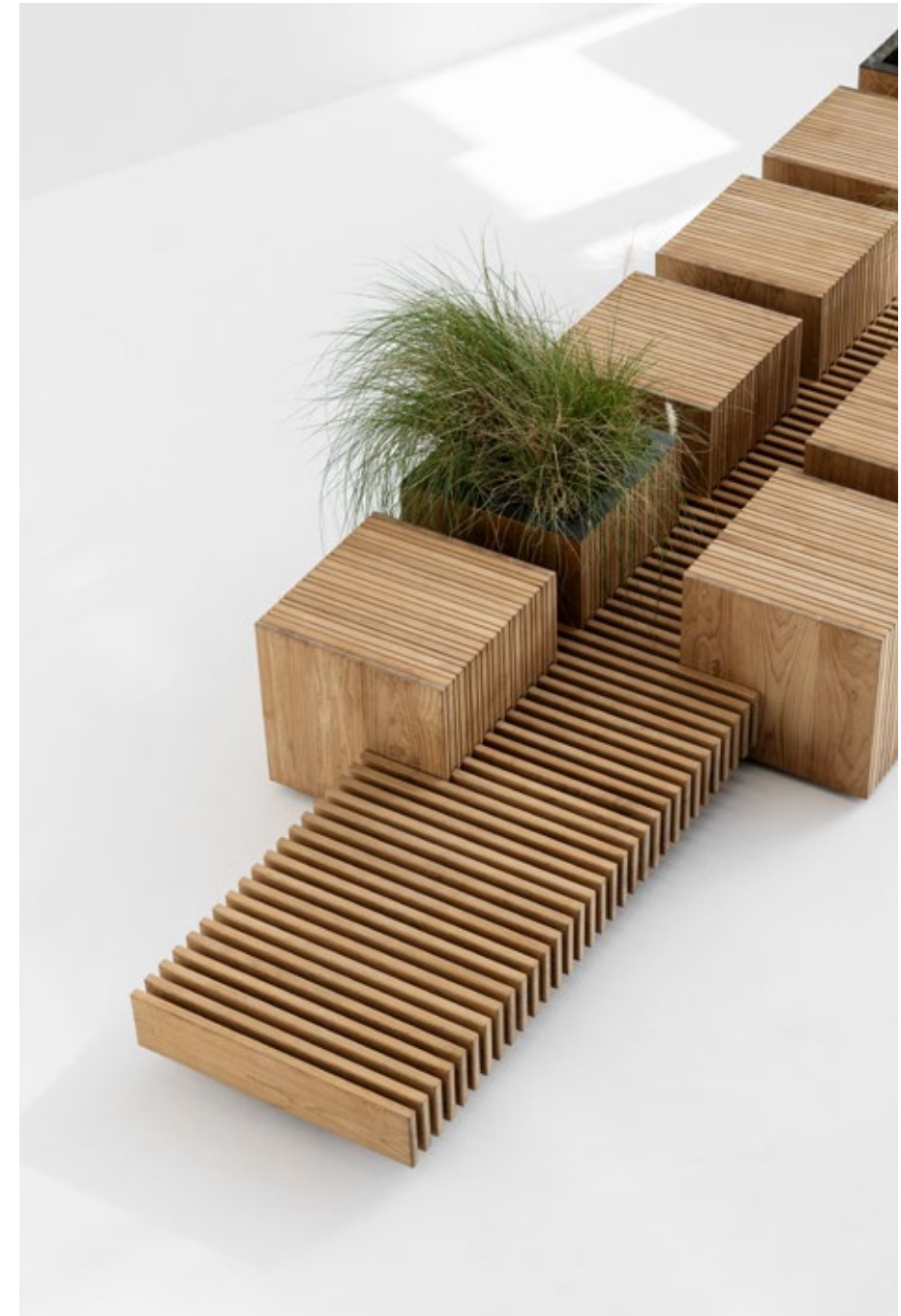
D3 Please sit here

Status: completed
Date: 2020

Inspired by the traditional Majlis with its inherent values of humility, equality and community, the bench is an exploration of connection and separation. Employing the thermal poplar wood in cuboid modular units of seat, tree, planter and sanitization, the modules engage with a linear comb-like Maplewood base, a plug-and-play approach of slipping into and out of the comb, with many possible configurations. The bench is thus an expression of Community and Disunity, with the separated seat modules slipping out of the main bench, and then slipping back when the social distancing measures of the Covid-19 pandemic are no longer required, creating the final bench form.



Khatt



Khatt



INDEX MAJLIS

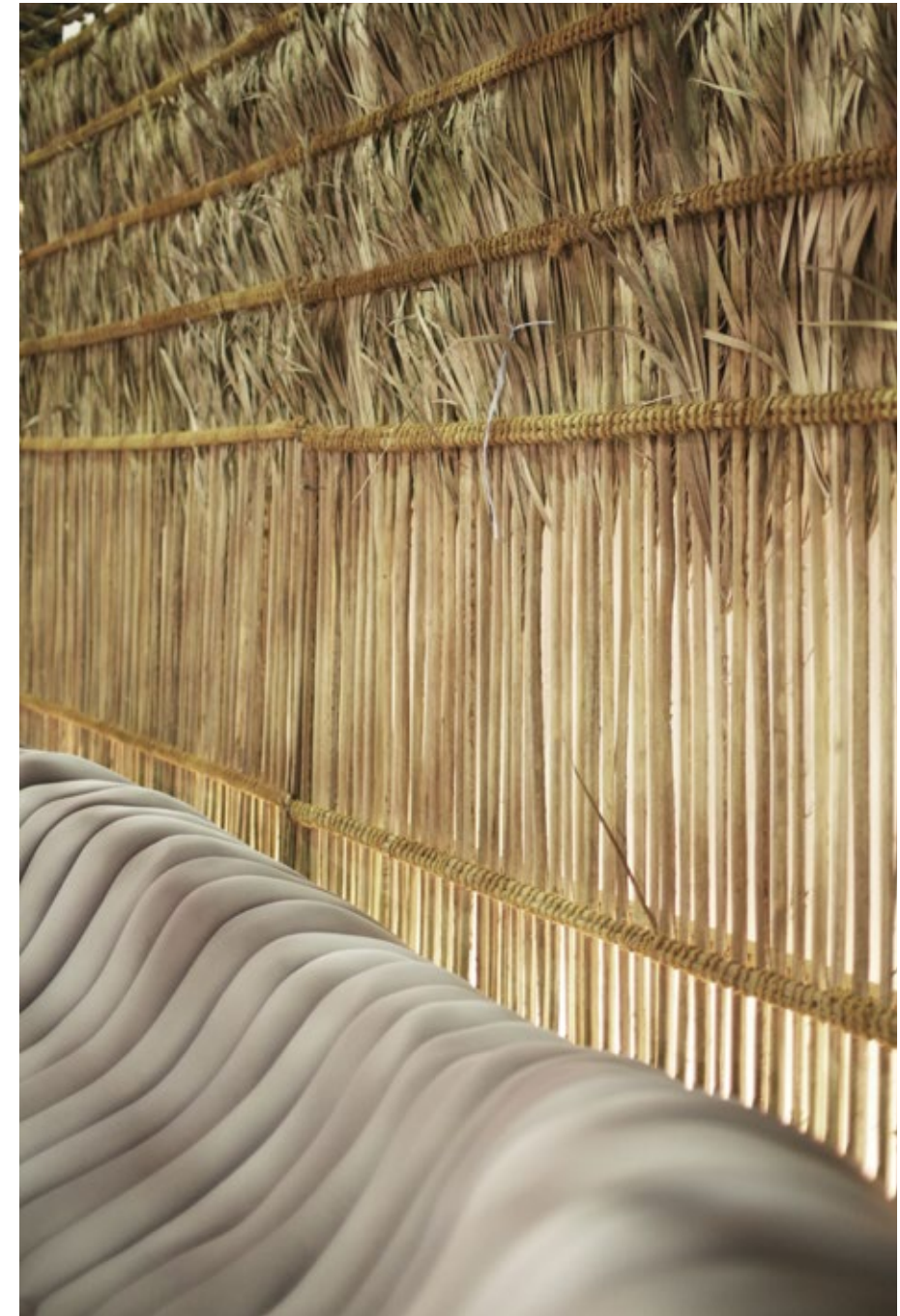
Status: completed
Date: 2013

As the winners of the INDEX 2013 "Contemporary Majlis" competition, designers were asked to re-envision what the traditional Majlis could be.

Inspired by footsteps left in the sand, the flow majlis concept came about by the idea of leaving behind your memory for someone else to discover. With sand giving the majlis its fluid structural integrity one has the ability to sit down and shape their own seat to what suits them best. Derived from Bedouin ideology, Flow allows people to sit low to the ground, which reflects humbleness, a strong connection to the land and the absence of a social hierarchy.



Index Majlis



Index Majlis



Bird Light Installation
Dubai . UAE

BIRD LIGHT INSTALLATION

Status: completed
Date: 2012

In March, 2012, more than 90 Iraqi students with 'emo' appearances were stoned to death by religious extremists in Baghdad. In collaboration with Adel Abidin, an international artist from Iraq, LOCI was commissioned to develop and build the concept. Abidin took this single event and transformed it into a tangible experience that examines death, the soul's quest for liberation and the tragic price paid in the name of freedom. Symphony is homage to these young people.

Al-Warqaa is inspired by Avicenna's poem (Ode to a Human Soul), which compares the journey of the soul to the flight of a dove. In his verses the soul represents a timeless, ethereal entity that soars beyond the body after death. It signifies eternity, detached from the heavenly sphere. A suspended object radiates light and depicts an intangible outline of a dove reflecting this concept through a visual language.

A suspended light-based sculpture radiates light and depicts an intangible outline of a dove reflecting this concept through a visual language.



Bird Light Installation



Bird Light Installation



Sr
Contemporary privacy screen

Sr

Status: completed
Date: 2017

Privacy has always been at the core of Middle Eastern society. Looking back through the centuries, architects and artisans alike have paid close attention to the idea of keeping private and public realms separated while maintaining a level of accessibility. 'Sr' celebrates the tradition of privacy by creating a visually semi permeable membrane that allows its users to merely peer through onto the other side.

By containing desert sand within the multi-wall polycarbonate sheets, LOCI re-envision's what a mashrabiya could be. With sand's intriguing physical properties, no two panels are identical truly giving each space a unique element.



Connection detail



Privacy screen



Nadd
Scent diffuser

NADD

Status: completed
Date: 2016

"Nadd" came into realisation with the intention of closely looking at an object entrenched in tradition. We did not set out to invent, but rather to innovate a cultural cue to fit a contemporary environment.

Functionality is paramount; looking into decade's worth of artisanal incense burners has informed main aspects of the design. The inclusion of a handle and the allowance of sufficient air circulation was a direct result of that. As part of LOCI's ethos, we have used the latest in design technology tools to achieve our goals. Using parametric software, the traditional Islamic hexagon was reimagined into a contemporary design that remains culturally relevant.



Nadd



Nadd

LOCI
architecture + design
Prism Tower . office 1411
Bussines Bay
P. O. Box 72928 . Dubai
United Arab Emirates

Trade license 678283

Professional indemnity: P/002/3005/2019/00090

W www.loci.ae

E info@loci.ae

T +9714.364.92.17

